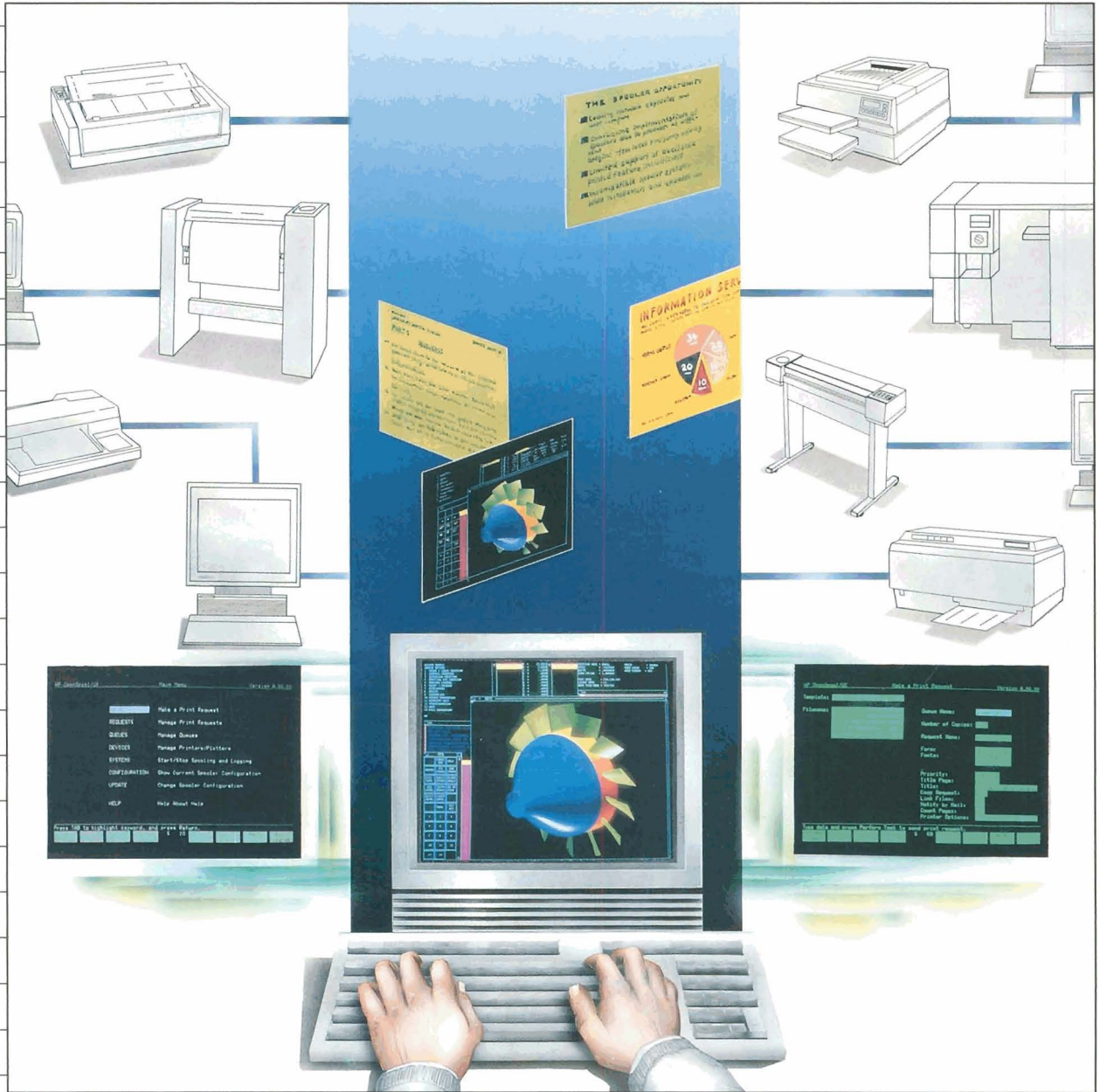


# HP CHANNELS

Information For Hewlett-Packard's Value-Added Businesses

June 1990



**Introducing HP OpenSpool/UX – the first  
distributed spooling solution on HP-UX**

# Table of Contents

## HP CHANNELS

Volume 10, No. 8

Editor  
Tracy Wester

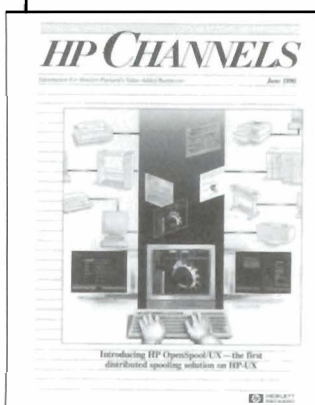
*HP Channels* is published monthly for Hewlett-Packard's value-added businesses to provide you with information about HP's products and services to help you be more successful.

For further information on any of the products and services discussed in *HP Channels*, please contact your HP sales rep.

See back cover for subscription information.

*Note: Not all HP computer products are sold and supported in all countries. Please check with your local HP sales office. Hewlett-Packard does not warrant the accuracy of the information provided in HP Channels and shall not be liable for any use made of the information contained herein. Information provided in HP Channels is subject to change without notice.*

On the cover



HP OpenSpool/UX is the first distributed spooling solution for HP-UX systems, featuring outstanding functionality, high user comfort, and advanced system management capabilities. HP OpenSpool/UX is the recommended spooling solution for HP 9000 Series 300, 600, and 800 systems. See article on page 15 for more details.

HP CHANNELS  
June 1990

## PARTNERS WITH HP

- 1 Major news from U.K. VAB Programme  
HP Executive Training Series schedule

## PRODUCT NEWS

### Business Computers

- 2 **General**  
Introducing HP NewWave Mail  
HP NewWave Office now shipping  
HP NewWave Office phased delivery update  
HP NewWave Office component functionality update  
HP NewWave Office support and training update  
HP OpenMail available in six more European languages  
Information update for HP DeskManager Intrinsics
- 8 **HP 3000**  
HP 3000 systems management functionality  
Remote system management with HP OpenView System Manager  
Introducing TurboSTORE/XL II  
New option on HP 3000 Series 922RX, 922, and 932 systems

### Technical Computers

- 11 **HP 1000**  
SCSI interface available for HP 1000 A-Series computers  
HP 1000 SCSI interface with rewritable optical disk
- 11 **HP 9000**  
HP Advanced Image Management System  
New software support program for HP Advanced Image Management Systems  
One spooling solution for all HP-UX computers  
HP 9000 Model 840S hardware accessories removed from HP Price List

### Workstations

- 17 **General**  
Task Broker update
- 17 **Apollo**  
Announcing Domain Modula-2 for Apollo workstations  
Update on C++ product release  
New version of NCS shipping  
Apollo Series 2500, 3500, and 4500 new pricing  
MC68040 board upgrade  
Basic training on Domain networking products now offered

- 20 **HP-UX**  
DIO Real Time Interface card for HP 9000 Series 300 system  
HP announces Asian HP-UX products for HP 9000 Series 300 and 800 systems  
ALLBASE/NET for the HP 9000 Series 300 system

HP 9000 Series 300 SPU restructuring  
HP 9000 Series 300 MC68020-based workstation obsolescence  
HP 9000 Model 375 does not support Pascal/WS  
HP 9000 Series 500 SRM product discontinuance

### Personal Computers

- 24 **Desktop**  
HP introduces the HP Vectra 286/12 PC  
New 256-Kbyte memory upgrade kit for HP Super VGA board  
New MaxFlex pricing  
New HP Vectra PC shipping container  
HP Vectra PC memory upgrade kit price reduced  
Multimode monitor obsolescence June 1

### Peripherals

- 27 **General**  
HP 45911A graphics tablet obsolescence  
HP 64100A development station discontinuance plan
- 27 **Mass Storage**  
HP Series 6000 Models 330S and 660S selection  
HP Series 6000 disk storage systems as add-on disks  
HP Series 6000 disk storage systems price increase  
M-inch tape drive price reduction  
HP 35401A obsolescence  
HP 7962B, 7963B, and 97962B product discontinuance

### Networks

- 29 **Networks**  
Introducing HP LAN Manager/X for 386/486 servers  
Introducing HP OpenView Network Node Manager  
New release of HP OpenView DTC Manager software  
HP OpenView Windows available on non-HP PCs  
New release HP TSS software (LSM) available  
NS X.25 PAD printer enhancement now available

### Printers

- 32 **Printers**  
HP MasterType Library enhancements  
HP LaserJet III printer supported on HP 3000 systems  
HP Word family supports new HP LaserJet printer font cartridges  
HP toner cartridge recycle program

### Supplies

- 34 **Supplies**  
HP DIRECT order phone numbers

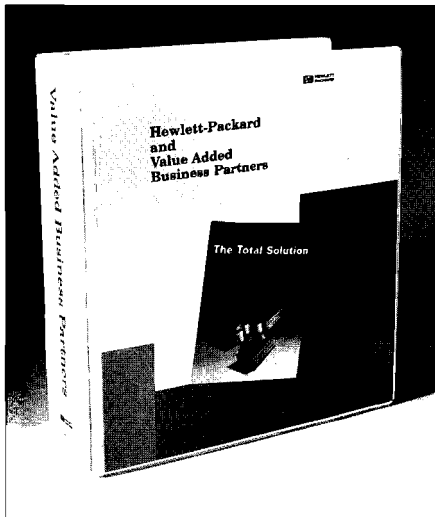
## CROSS-LICENSING CLASSIFIEDS

- 35 Software Packages Available and Wanted

**HP Computer Museum**  
**[www.hpmuseum.net](http://www.hpmuseum.net)**

**For research and education purposes only.**

## Major news from U.K. VAB Programme



The U.K. Value-Added Business Programme announces the first value-added business binder entitled, "The Total Solution," specifically aimed at providing concise, detailed information for our VABs in the United Kingdom.

The aim behind its production is to provide more than just a sales tool. The binder contains comprehensive reference materials approached logically by hardware type: HP 3000, HP 9000 Series 800 and 600, HP peripherals, and networking. The materials include the long-awaited simplified price lists, configuration guides, product data sheets, and literature samples.

It details the range of Hewlett-Packard services available to VABs in the U.K., such as training courses and the Software Loaner Programme, as well as providing information about Hewlett-Packard. The binder provides an improved and more regular information service that our VABs need in order to sell and win with Hewlett-Packard.

The first edition of the binder will be distributed by the HP sales force directly to our VABs. However, we will be continually striving to improve the information we are providing, and plans are already under way for the second edition, which will not only include

updates but new items based upon the feedback we receive from our VABs.

These subsequent editions will be mailed directly to you. If you require additional copies, they can be ordered through your HP representative; ask for P/N 5999-0203.

Please note: this exciting step in the VAB Programme is currently available in the U.K. only.

If you have further questions or comments, please contact "The Total Solution" Production Team, either Cathryn Whiteside or Suzanne Woodger, on 0344-360000, or Jill Cooper on 071-583-6565.

## HP Executive Training Series schedule

The Executive Training Series features regular seminars for HP value-added businesses. A 1990 program guide and updated schedule were sent to VAB contacts in mid-May. There's still time to enroll in seminars scheduled for the second half of 1990. Space is limited, so sign up now. If you wish to receive a

program guide or have questions, call Chip Pettibone at Hewlett-Packard, 408-447-4175.

### Prepayment discount

While you may pay on the day you attend the course, we are pleased to offer a \$50 discount for prepayment. Your check must be received by the registration contact at least two weeks before the class. *Note: This discount is not available for the Strategic Selling course.*

### Registration instructions

Call the appropriate registration contact listed below for the seminars you wish to attend to tentatively reserve your space. Registration is complete and space guaranteed when your check is received by the registration contact. Make checks payable to "Hewlett-Packard Co."

A schedule of upcoming Executive Training Series classes is a regular feature of this page in *HP Channels*. Seminars to be held in June, July, and August are listed below.

Hewlett-Packard reserves the right to cancel seminars or change prices, dates, and locations.

Date	Location	Fee*	Contact	Phone
<b>Strategic Marketing Planning</b>				
June 19-20	Foster City, Calif.	\$495	Kitty Johnston	415-378-8525
July 24-25	Montreal, Canada	495	Eileen MacLean	414-678-9430
<b>Marketing Communications</b>				
July 10-11	Denver, Colo.	275	Sharon Rhodes	303-649-5822
<b>Effective Sales Literature</b>				
June 13	Paramus, N.J.	195	Bea Vena	201-599-5748
<b>Sales Training</b>				
<i>Strategic Selling</i>				
June 13-14	Cleveland, Oh.	250	Carlotta Eady	216-243-7300
<i>Productive Teleprospecting</i>				
August 15	Naperville, Ill.	195	Elaine Smith	708-505-8800

\*U.S. list prices

## Business Computers

General

### Introducing HP NewWave Mail

HP NewWave Mail (P/N D2103A and D2113A) is a comprehensive, corporate-wide communications system for use in the intuitive, easy-to-use NewWave environment on the HP Vectra PC, IBM, and other compatible PCs. Wherever PC users need to communicate with others on the corporate HP 3000 network or beyond, HP NewWave Mail provides a fully integrated, transparent solution. It is the recommended user interface for the information distribution services for HP NewWave Office for MPE.

HP NewWave Mail is targeted towards those users who need corporatewide communications, PC integration, and easy-to-use and -learn user interface.

#### Features

- fully integrated with HP NewWave environment
- send and receive any HP NewWave or non-HP NewWave item
- connect using HP OfficeShare or EDCL serial connection
- automatic background mail transfer
- new mail notification
  - urgent and private priority
- automatic name checking against HP DeskManager database
- continuous or batch connections

#### Benefits

- full HP NewWave integration that's easy to learn and use with improved productivity
- transparent connection to the network so users do not have to be data communication experts to use it

- productivity improves as users continue working while messages are sent in the background
- remote connections made cheaper by using batch mail transfer at off-peak rates
- protect investment — compatible with AdvanceMail and HP DeskManager file formats; can use existing AdvanceMail, AdvanceLink, or Reflection connection files; uses existing data communication links (LAN, X.25, modem, or serial connection); upgrades from AdvanceMail and converts data to NewWave format

#### Questions and answers

*I've seen the controlled release of HP NewWave Mail; what are the differences between that version and release 1.0?*

The controlled release version was released so that NewWave users could communicate. However, significant enhancements have been made to the product since then. If you have copies of the controlled release, you should stop using or demonstrating it and move to release 1.0.

*When will HP NewWave Mail be available for OpenMail?*

HP NewWave Mail will be available for OpenMail in release 2.0 later this year.

*When will HP NewWave Mail be available for LAN Manager?*

At the same time that OpenMail support is included, LAN Manager support will also be added. Both should be available in release 2.0. This means that in addition to supporting OpenMail on the HP 9000 platform, HP NewWave Mail will be able to connect to OpenMail OS/2 and UNIX 386 servers.

*What else can I expect from Release 2.0?*

Also planned for Release 2.0 is support for Windows 3.0, NewWave, and full X.400 addressing.

*Can users upgrade from AdvanceMail to HP NewWave Mail?*

There will be an upgrade from AdvanceMail to HP NewWave Mail. There will also be a utility to enable users to convert their AdvanceMail filing cabinet to HP NewWave folders.

*Can I order HP NewWave Mail as part of NewWave Office?*

HP NewWave Mail and AdvanceMail are both included in NewWave Office for MPE. HP NewWave Mail will be available in NewWave Office for HP-UX in a later release.

*What is the difference between Da Vinci eMail for NewWave and HP NewWave Mail?*

The main difference between Da Vinci's eMail and HP NewWave Mail is that NewWave Mail connects to HP DeskManager, Da Vinci does not provide this connectivity.

#### Ordering information

Product No.	Description
D2103A	HP NewWave Mail software and documentation
D2113A	HP NewWave Mail user license. Right to make 1 cop) of D2103A
D2133A	HP NewWave Mail documentation

Contact your HP representative for more information.

General

## HP NewWave Office now shipping

HP NewWave Office, HP's office implementation for NewWave Computing, is now shipping. The HP NewWave Office product offering is available for MPE XL (P/Ns B1710-B1717), MPE V (P/Ns B1720-B1726), or HP-UX (P/Ns B1701-B1707) for HP 9000 Series 600 and 800 users in a flexible product structure. HP NewWave Office is targeted towards information system or business managers seeking an open flexible software system for improving organizational response time to changing user and competitive requirements.

### HP NewWave Office component availability

- NewWave Office began shipping on May 21 for HP-UX, on May 31 for MPE V, and will begin shipping on June 7 for MPE XL product.
- The NewWave Environment Agent facility with Windows 3.0 support and Object Storage, will be available in the second calendar half to all NewWave Office users at no additional charge.

- Information Access SQL services on MPE XL systems will be available later this year. Information Access Services to TurboIMAGE will ship in the initial release.
- NewWave Mail on HP-UX will also be available later this year. Advance-Mail will be shipping with the initial release.

### HP NewWave Office component functionality

configuring NewWave in LAN environments

- HP NewWave Office with LAN Manager new license features helps users improve software license compliance

### HP NewWave Office support and training products

- HP NewWave Office support contracts ensure user satisfaction.
- Business System Plus users can easily migrate to HP NewWave Office.
- HP NewWave Office now has user training classes.



General

## HP NewWave Office phased delivery update

### No-cost update program in place for NewWave environment agent facility

A no-cost update program to HP NewWave Office with the Agent facility and MS-Windows<sup>B</sup> 3.0 support will be available for all users taking shipment of HP NewWave Office with NewWave 1.1 and MS-Windows 2.11 support.

Although Microsoft<sup>®</sup> began shipment of Windows 3.0 in May, major dealers will continue to have Windows 2.11 available through the September 1 October timeframe, ensuring a supply for HP NewWave Office users. In addition, please be aware that Microsoft has a low-cost update to MS-Windows 3.0 for all MS-Windows 2.11 users.

### HP NewWave Office makes the PC update easy

Networked PC Management Services make PC software updates easy. HP NewWave Office LAN users can load the updated product tapes onto the HP 3000 or HP 9000 Series 600 or 800 server. The update can be initiated as needed with a few easy keystrokes.

### Information Access SQL services on MPE XL

During the introduction of HP NewWave Office, availability for the Information Access SQL service on MPE XL systems was stated as being on the MPE XL 2.1 MIT. The Information Access SQL service allows PC users access to relational databases (HP ALLBASE/SQL and ORACLE, Version 6.0). Version 6.0 of ORACLE has incurred production delays that have impacted the Information Access SQL service for MPE XL (PIN B1717A) shipment date. The Information Access

*continued on next page*

SQL service for MPE XL systems will be available on a later MIT release this year.

For nonrelational databases (i.e. TurboIMAGE) on MPE XL systems, Information Access (PIN B1716A) will be available on XL 2.1 MIT as originally planned. The Information Access SQL service on HP-UX for HP ALLBASE/SQL and ORACLE became available in May.

**HP NewWave Mail for HP-UX**

As originally announced, HP NewWave Mail for HP-UX will not be available with initial HP NewWave Office shipments. HP NewWave Mail for HP-UX will be available later this year with HP NewWave Office for HP-UX and MS-Windows 3.0 compatibility. AdvanceMail will be shipping with the HP NewWave Office initial release.

All HP NewWave Office HP-UX users requiring HP NewWave Mail will be updated with this functionality. HP NewWave Mail for MPE systems will be available with first user shipments of HP NewWave Office.

Contact your HP representative for more information.

*MS-Windows and Microsoji are U.S. registered trademarks of Microsoji Corporation.*

*General*

**HP NewWave Office component functionality update**

**Configuring NewWave in LAN environments**

Successful implementation of HP NewWave in LAN environments requires the correct PC DOS memory configurations. The increasing size of DOS PC programs with enhanced features, as well as the addition of LAN software requirements, has increased demand for DOS memory. With system memory tuning information, users can get the maximum memory usage from their HP NewWave Office DOS PCs. Memory tuning information is available from HP NewWave Environment and Microsoft Windows manuals.

**License control facility to be implemented with next release**

In order to help users comply with HP NewWave Office software licensing, future releases of the product will contain a license control facility. For the HP NewWave Office user-based license Option UA2, the control facility will limit users based on the licenses purchased. For host-based license product options, it will prevent usage on a system tier greater than the purchased system tier. For example, HP NewWave Office for an HP 3000 Series 922RX (Option 320) will not run on a

Series 960 (Option 340) when license control authorization is in effect.

Current HP NewWave Office users should retain software certificates. All software certificates for HP NewWave Office orders will include product option, quantity, and license code. Although license control will not be implemented in this release, a note on the software license certificate informs users that they need to retain the certificate for future use.

**HP NewWave Office and HP LAN Manager/X**

HP 9000 Series 800 and 600 users have a choice of products for shared resource services, HP NewWave Office, and HP LAN Manager/X. These products can be divided into client software and server software. The client software resides on the DOS PC and the server software resides on the HP-UX host. The server software for both these products is the same — HP LAN ManagerIX. The client software is different. The HP NewWave Office client software is OfficeShare and the HP LAN Manager/X client software is LAN Manager for DOS and for OS/2 workstations.

<i>Product</i>	<i>Server software</i>	<i>Client software</i>
HP NewWave Office for HP-UX Series 800 and 600	LAN Manager/X	OfficeShare
LAN Manager/X	LAN Manager/X	LAN Manager

The OfficeShare and LAN Manager client software provide different functionality. OfficeShare provides the functionality required for all HP NewWave Office Applications, as well as LAN Manager file and print sharing and terminal access. The LAN Manager client software provides LAN Manager print and file sharing and LAN Manager APIs for Named Pipes and Mailslots applications. It also provides support for other LAN Manager network management features including advanced security and printer management. The additional purchase of HP ARPA Services 2.0/MS-DOS is required for access to HP NewWave Office applications and for terminal access.

Users should purchase HP NewWave Office for HP-UX with OfficeShare clients when they require HP NewWave Office application support for Information Distribution and Information Access and Network PC Management Services and do not immediately require LAN Manager APIs. Users who require LAN Manager APIs for application development or third-party applications that use these APIs or to gain access to additional LAN Manager network management functionality should purchase LAN Manager/X with LAN Manager clients.

Contact your HP representative for more information.

configuring PCs with the NewWave Environment. Other MPE products are user installable. Time and materials consulting will be quoted for users who want HP to install the non-Shared Resource HP NewWave Office products.

HP NewWave Office for HP-UX is user installable. For the four HP NewWave Office products that include Shared Resource and Network PC Management Services, the installation assistance product is available as P/N HP 50780A.

### Business System Plus updates to HP NewWave Office

HP NewWave Office began shipping to Business System Plus, Resource Sharing, and Information Access support contract owners at the end of May. Contract owners will receive NewWave Office components as a software update. The update will include components corresponding to the owners' old Business System Plus components. The NewWave environment, the NewWave Technical Reference Set, and HP NewWave Mail will not be included with the updates.

Business System Plus support contract users can move to full NewWave Office with any number of copies of the NewWave environment. This will allow users to combine the benefits of Business System Plus Services with the easy-to-use graphical NewWave environment and applications. Users can then change their existing Business System Plus support contracts to an HP NewWave Office support contract. Users may also choose to retain their existing Business System Plus support contracts.

*continued on next page*

### Functionality provided

Client software	File and print sharing	Terminal access	Support for NetIPC NewWave office applications	Supports LAN Manager APIs
OfficeShare (included with HP NewWave Office for HP-UX)	✓	✓	✓	Not available
LAN Manager (included with LAN Manager/X)	✓	Buy HP ARPA Services 2.0/MS-DOS	Buy HP ARPA Services 2.0/MS-DOS	✓

*Note: NetIPC applications include AdvanceMail, OpenMail, Information Access, and NewWave Mail when available. LAN Manager APIs include support for Named Pipes and Mailslots applications.*

#### General

## HP NewWave Office support and training update

Hewlett-Packard's industry-leading software support program ensures users will be satisfied with the HP NewWave Office products. Software Materials Update service will ensure the user's software is up-to-date; it provides software updates that include product enhancements and fixes as well as manual updates. Ordering support for NewWave Office is done in the same way as other HP software support products.

Installation responsibilities for HP NewWave Office on MPE are different from those on HP NewWave Office on HP-UX. Two hours of installation are bundled into HP NewWave Office products for MPE that include Shared Resource and Networked PC Management Services. These installation services cover installation of the server and first PC. Users can order five hours additional PC installation with P/N 50780A. Users may need to order additional time and materials for



## NewWave Office customer training program in place

HP NewWave Office goes beyond hardware and software. It extends to giving users the skills that will make them successful. Customer training puts users on the fast track to getting their HP NewWave Office system up and running quickly and effectively.

Product No.	Course title
32572A	HP NewWave Office for MPE Implementation and Administration
32573A	HP NewWave Office for HP-UX Implementation and Administration

Students will learn planning and configuring HP NewWave Office solutions, how to maximize the benefit of the HP NewWave Office Services, local area network concepts for successful usage of HP NewWave Office, and practical usage of HP NewWave Office configuration and maintenance tools.

Network managers and system administrators who are responsible for planning and managing a LAN office environment using HP NewWave Office should attend, as well as users who are not yet convinced that HP NewWave Office is for them. This training provides a cost-effective way to evaluate the benefits of sharing resources using HP NewWave Office.

Contact your HP representative for dates and locations of these courses (which can also be delivered at the users' sites).

## General

# HP OpenMail available in six more European languages

On June 1, six additional European language options for HP OpenMail (PIN B1600A), the information distribution component of HP NewWave Office for HP-UX, were placed on the HP Price List. The new language support products are in Danish, Dutch, Finnish, Italian, Norwegian, and Swedish.

## Benefits

HP OpenMail is designed to operate in multiple languages in order that all the members of an organization, in whatever country, can communicate in their chosen language. In addition, multiple languages can be implemented on the same server, which benefits the user when the workforce is mobile and as a result, a variety of different nationalities are situated at the same location.

HP OpenMail language support products can be added to the system at any time, allowing the system to grow with the organization. Users will be able to work faster and more effectively when operating in their native language.

## Ordering information

The new language support products will be supplied under separate product numbers. Each new product number will have three media options: Opt. AAO, ¼-inch cartridge tape; Opt. AAI, ½-inch magnetic tape; and Opt. AAH, digital audio tape in DDS format.

Product No.	Description
B1602AD	Danish Language Support
B1602AH	Dutch Language Support
B1602AX	Finnish Language Support
B1602AZ	Italian Language Support
B1602AN	Norwegian Language Support
B1602AS	Swedish Language Support
<i>Media options for products above</i>	
Opt. AAO	¼-inch cartridge tape
Opt. AAI	½-inch magnetic tape (for HP 9000 Series 800 only)
Opt. AAH	Digital audio tape (for HP 9000 Model 832S only)

**Note: Orders for the HP OpenMail core product, P/N B1600A, must be accompanied by an order for at least one language support product.**

## Existing language support products

The above structure is different from that of the existing HP OpenMail language support products on the HP Price List — English, French, and German are options under P/N B1602A. This will soon be changed to reflect the new structure. Contact your HP representative for more information.

## Information update for HP DeskManager Intrinsic

HP DeskManager Intrinsic (PIN 27562A, version B.03.RO) is a set of tools designed to help programmers integrate their applications with HP Desk. It allows applications to access the core HP Desk services, such as electronic mail and gateways from outside HP Desk.

HP DeskManager Intrinsic is a "bolt-on" product to HP DeskManager. HP DeskManager Intrinsic offers organizations the opportunity to revolutionize their management of the information flow to and from their applications, by allowing an HP 3000 application to access, in a simple way, the mailing and other services of HP DeskManager.

By integrating applications to HP DeskManager using HP DeskManager Intrinsic, organizations will benefit from the right information being sent to the right people at the right time — *automatically*.

HP DeskManager Intrinsic is targeted towards current HP DeskManager users, especially those with a combination of different application software who need to connect with other mailing systems. It is also ideal for VABs that require advanced application integration with HP Desk to sell their packages more successfully.

All too often, organizations suffer the situation where critical information is not being delivered to the appropriate decision makers in time. This is time consuming and expensive. Since the relevant information is usually available from the organization's own applications (such as financial/manufacturing applications), the simple solution is to provide these applications with a fast and efficient information distribution mechanism.

### Features and benefits

HP DeskManager Intrinsic provides three types of intrinsic access to HP DeskManager: User Intrinsic, Gateway Intrinsic, and Supporting Intrinsic. These are basically a set of tools that provide users with the means of integrating their applications to HP DeskManager.

**User Intrinsic** — allows an application to log on to HP DeskManager, as if it were a user, and then send and receive items such as reports and messages.

▪ **Gateway Intrinsic** — allows a simple and efficient link from HP DeskManager to foreign mail systems. Gateway Intrinsic is a superior alternative to the existing HP DeskManager Foreign Service Connection and should be used to develop applications that connect HP DeskManager to other messaging systems.

▪ **Supporting Intrinsic** — provides support for both the User and Gateway Intrinsic. For example, they could provide the user's application with the ability to look into the HP DeskManager directories for a given name or list of names, and the ability to convert a document from one format to another.

HP DeskManager Intrinsic is a set of tools that allow users to simply and effectively integrate their own applications to HP DeskManager. HP DeskManager Intrinsic is a differentiator for HP as it allows the application to keep its own user interface with HP DeskManager running as the "son" process invisibly under the application. A new version of HP DeskManager Intrinsic has been released and is available on MPE V V-Delta-9 or later and MPE XL 2.1 or later.

Product No.	Description
27562A	HP DeskManager Intrinsic right to use
Opt. 310	Right to use software for use on HP MICRO 3000 family, Series 37 and 922LX
Opt. 320	Right to use software for use on HP 3000 Series 39, 4X, 5X, 922RX, 922, 925LX, 925, and 932
Opt. 330	Right to use software for use on HP 3000 Series 6X, 70, and 935
Opt. 340	Right to use software for use on Series 930, 949, 95X, 960, and 980
Opt. OCD	Upgrade from Opt. 310 to 320
Opt. OCE	Upgrade from Opt. 320 to 330
Opt. OCF	Upgrade from Opt. 330 to 340

Contact your HP representative for more information on HP DeskManager Intrinsic; a data sheet is also available (PIN 5959-9661).

HP 3000

## HP 3000 systems management functionality

In January, Hewlett-Packard introduced the HP 3000 Series 980 — mainframe-class performance at one-third the price of traditional mainframes. Now we are introducing mainframe-class systems management functionality for your data center operations.

Systems management is the process by which systems and data center managers ensure efficient operations of their computer system environments. These environments may be either distributed production systems or centralized data center environments.

### Industry says we are on target

Preliminary feedback from industry watchers is that we are right on target. They were excited by our leadership vision of converging open network management, via HP OpenView, with more traditional data center management capabilities.

### Systems management is becoming crucial

HP 3000 systems management will provide mainframe-class systems management functionality and can do the following:

- **Lower operating costs and improve efficiency through operatorless and unattended support** — Though the hardware costs of computing are falling dramatically, the staff operations costs of computing are rising. Staff costs are rising due to the increased complexity of systems and greater number of distributed systems. With new computing topologies, such as client/server, the ability to reduce staff cost will become even more of an issue in the 1990s. Users are attempting to reduce this cost through new procedures, greater efficiency, and automation.

- **Improve service quality (i.e., foresee and resolve problems, minimize system downtime, increase flexibility)** —

While staff costs must be curtailed, increasing global competition demands improvements in quality and user satisfaction. Since on-line transaction processing (OLTP) applications are becoming critical to a business' mission, MIS must also offer higher-quality service in supporting those applications (e.g., increased system availability).

- **Increase management flexibility** —

Aimed at providing tools that can be implemented to meet the specific management needs of the user. For example, the flexibility to allow users the ability spool to a local HP LaserJet printer.

### Integrating system and network is critical

HP OpenView provides for the integration of system and network management in distributed environments, and is key to our strategy. HP OpenView's solution has just become better with the introduction of HP OpenView System Manager.

The new HP OpenView System Manager is the first implementation of an integrated system and network solution. It provides far greater functionality than any other solution in the marketplace, particularly in managing a distributed computing environment.

### Superior operatorless support

HP OpenView System Manager was designed for low-cost operatorless management of a distributed computing environment. To further support the operatorless environment, we are introducing products such as HP TurboSTORE/XL II and HP AutoRestart/XL. With TurboSTORE/XL II's support for high-capacity devices and data compression, the HP 3000 offers unattended backup. AutoRestart/XL provides automatic, unattended error logging and restart during a software failure. Future products will broaden the support for an operatorless environment, continuing to lower user's cost of computing.

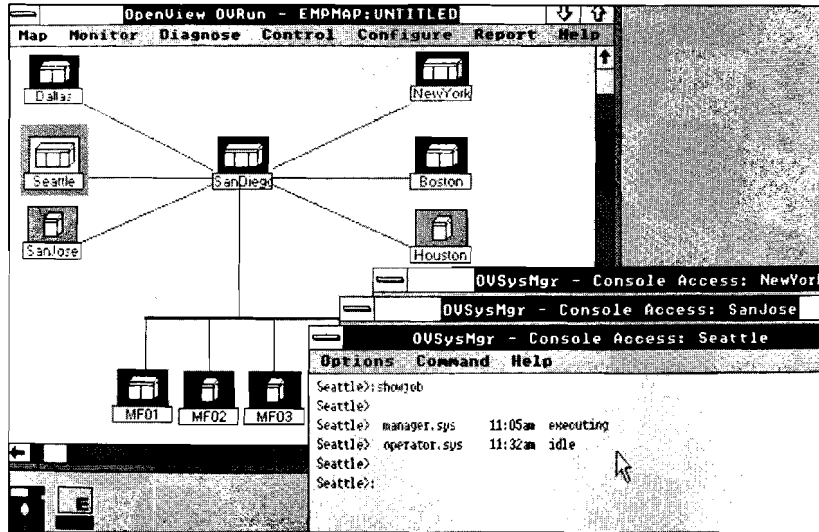
### Other products for even more functionality

SPU Switchover/XL allows automatic detection of processor failures and initiation of switchover between any pair of 900 Series HP 3000 systems. Both SPUs can be running applications, and system overhead is minimal.

ALLBASE/Turbo CONNECT allows transparent access from ALLBASE/SQL to TurboIMAGE. The users' investment in TurboIMAGE applications is protected, and they get a growth path to ALLBASE/SQL's flexible, open systems-based, relational technology.

For more information, please contact your HP representative.

## Remote system management with HP OpenView System Manager



HP OpenView System Manager allows system operators to monitor and control networked HP 3000 systems from a single, centralized, PC-based console. It increases system uptime by providing faster fault detection and by enabling faster fault resolution. It reduces the cost of ownership of HP 3000 systems by consolidating operations control and expertise to a central site. It reduces operator expertise required at remote sites, providing the foundation for unattended operations.

### Features

- *System status notification* — frees operators from monitoring console messages for all systems by automatically notifying the HP OpenView System Manager console of problems. This increases operator efficiency and provides faster fault detection.
- *Virtual console* — allows operators to execute commands for each managed system's hardware console from the central console. Centralizing system monitoring and control makes problem detection and resolution faster and easier.

- *Event API (application programming interface)* — allows user-written applications to send messages to the central console. Application monitoring increases application uptime.

HP OpenView System Manager, residing on the DOS platform, is a subnet manager for the HP 3000 subnet. It enhances the HP OpenView offering by bringing HP 3000 system management under the HP OpenView umbrella. It offers the common HP OpenView look and feel and a growth path into full integration of HP OpenView system and network management across all HP platforms.

Configuration of this product is dependent on the user's network environment. Contact your HP representative for more information.

## Introducing TurboSTORE/XL II

Hewlett-Packard announces TurboSTOREIXL II, a new data backup product that adds to the multiple device fast backup capabilities of TurboSTOREIXL and addresses user needs for more powerful and flexible data backup solutions. TurboSTOREIXL II is a key part of the Storage Management component of the HP 3000 Systems Management strategy. With TurboSTOREIXL II, it is possible to eliminate the need for operator staffing during data backups and perform on-line data backup with virtually no interruption in application processing. TurboSTOREIXL II provides software data compression to dramatically increase backup device performance and capacity. When used with high-capacity storage technologies such as Digital Audio Tape, TurboSTORE/XL II provides unattended data backup capability by completely eliminating the need to manually change media during data backup. Optional TurboSTOREIXL II on-line data backup allows processing to continue during data backup for 24-hour a day system availability.

### Features and benefits

- *Software data compression* — Software data compression is a major new capability provided with TurboSTOREIXL II. Software data compression, because it compresses data before it is sent to the backup device, dramatically increases backup device performance and capacity. For flexibility, TurboSTOREIXL II provides two different compression algorithms: a fast algorithm and a high-density algorithm. The fast data compression algorithm provides 2.1 to 1 data compression, more than doubling backup device performance and capacity and provides the best trade off between

*continued on next page*

data compression and CPU resource consumption. The high-density algorithm consumes more CPU than the fast-compression algorithm, but provides 3.6 to 1 data compression, thus maximizing single device backup performance and capacity on high-end HP 3000 systems.

- **On-line data backup** — For environments that require 24-hour a day system availability, TurboSTOREIXL II can be purchased with the optional feature of on-line data backup. TurboSTOREIXL II On-Line Backup is software-based and does not require mirrored disks. However, if mirrored disks are present, TurboSTORE/XL II On-Line Backup receives the full protection from disk failure that mirrored disks provide. TurboSTOREIXL II on-line data backup is applicable to all application data types and requires a short application downtime interval of approximately 5 minutes as the on-line data backup starts to ensure logical data integrity. For applications that use ALLBASEI SQL exclusively, TurboSTOREIXL II On-Line Backup will provide on-line backup with no application downtime or interruption in application processing with the release of MPE XL 3.0.
- **Multiple device store and restore** — TurboSTOREIXL II supports the storing and restoring of data with multiple 1/2-inch or DDS units running in parallel and can be purchased with an option for the support of the Rewritable Optical Disk Library System. Up to eight devices running in parallel are supported (the Rewritable Optical Disk Library System contains two optical disk devices). DDS is supported at the first user shipments of TurboSTOREIXL II. Support for rewritable optical disk will be added by the end of 1990. TurboSTORE/XL II and DDS provide a cost-effective operatorless data backup

solution for medium- to large-size configurations while rewritable optical disk will provide sufficient capacity for the very largest configurations.

- **Labeled tape support** — TurboSTOREIXL II also adds support for IBM and ANSI labeled tapes which can be used with third-party tape management products such as those from UNISON and OCS. Labeled tapes ensure that the correct tape is mounted and helps prevent the errors that occur when the wrong tape is mounted.
- **Full data interchange** — Full data interchange between TurboSTOREIXL II, TurboSTOREIXL, and STOREIXL is provided so that users can be assured of always being able to move data between PA-RISC HP 3000s, regardless of which data backup product is used.

**Compatible operator interfaces** — The command set of TurboSTOREIXL II is an evolutionary superset of the STOREIXL interface with enhancements to support the new features of TurboSTOREIXL II. Because of this, minimal operator training is required to access the powerful features of TurboSTOREIXL II.

TurboSTOREIXL II adds to the powerful data backup capabilities possible with TurboSTORE products. TurboSTOREIXL II helps reduce both system operation costs and system downtime. TurboSTOREIXL II unattended data backup and on-line unattended data backup provide the ideal data backup capabilities for environments that have limited operator staffing and require 24-hour a day system availability.

HP 3000

## New option on HP 3000 Series 922RX, 922, and 932 systems

Effective on the May 1, 1990, HP Price List, a new option (ICE) is available on the HP 3000 Series 922RX (PIN A1046A), Series 922 (PIN A1033A), and Series 932 (PIN A1041A) systems. The option allows users to delete one of the two integrated 670-Mbyte disk drives that are included standard with the Series 922RX, 922, and 932.

Option ICE is being offered primarily for upgrade users who do not need the full 1.3 Gbytes of disk storage that comes standard with the Series 922RX, 922, and 932 systems. Since one integrated 670-Mbyte disk is still required with the system, the maximum quantity that can be ordered of option ICE is one.

### Also in this issue

<b>HP 7962B, 7963B, and 97962B product discontinuance</b>	<b>29</b>
<b>Introducing HP OpenView Network Node Manager</b>	<b>30</b>
<b>New release of HP OpenView DTC Manager software</b>	<b>30</b>
<b>HP LaserJet 111 printer supported on HP 3000 systems</b>	<b>33</b>

## Technical Computers

HP 1000

### SCSZ interface available for HP 1000 A-Series computers

On May 1, Hewlett-Packard introduced the HP 1000 A-Series SCSI Interface (PIN 12016A). The newest addition in the continuing evolution of the HP 1000 A-Series family, this interface will support the latest generation of HP peripherals that utilize the small computer systems interface (SCSI).

At introduction, the 12016A SCSI Interface will support the HP Series 6300 Model 650/A rewritable optical disk. Additional SCSI peripherals including the HP Series 6000 Models 330S and 660S and the digital audio tape (DDS-format drives) are planned for support later in the year. RTE-A system disk support (boot capability) on SCSI disks is also planned for the end of 1990.

The 12016A is a standard A-Series I/O interface capable of up to 2.0 Mbytes per second sustained transfer rate, twice that of the 12009A HP-IB interface. Both single-ended and differential operation are supported on the SCSI interface by selecting the appropriate cable option. The RTE-A interface and device drivers will be provided as software media options to the standard product.

#### Ordering information

Product No.	Description
12016A	HP 1000 SCSI interface, includes installation and reference manual and single-ended interface cable
Opt. 001	Replaces single-ended cable with differential cable
Opt. 022	Provides software on CS-80 cartridge tape media
Opt. 044	Provides software on 3%-inch microfloppy media
Opt. 051	Provides software on 1600-bpi magnetic tape media
Opt. 100	SCSI interface (12016A) provided without manual or software media options

HP 1000

### HP 1000 SCSZ interface with rewritable optical disk

What if you could connect HP's optical disk technology to your HP A-Series computers, more than double the performance of the A-Series HP-IB interface, and save money?

Well, you can with the latest promotion from Hewlett-Packard. On May 1, HP introduced the 12016A HP 1000 SCSI interface for the A-Series computer family (see previous article). Until October 31, with the purchase of the new HP 1000 SCSI interface and the HP Series 6300 Model 650/A rewritable optical disk, you can save an additional 7½ percent on each of these new products (percentage may vary from country to country). **Please note: Even though this is a worldwide promotion, it may not be available in all countries; check with your HP representative for more information.**

The 650-Mbyte HP Series 6300 Model 650/A is a compact, removable disk of unsurpassed reliability tuned for archival and top-security applications.

The 12016A HP 1000 SCSI interface provides transfer rates of up to 2.4 Mbytes per second to a variety of disk drives and other peripherals from HP. And the card's factory-supported design environment lets users write custom device drivers.

To find out more about the SCSI/1000 Optical Disk Bonus Pack promotion, contact your local HP representative or sales office.



HP 9000

### HP Advanced Image Management System — an exciting new market

An information explosion is affecting the business world. High volumes of paper-based information are a characteristic of even the most automated of offices. It is critical in many businesses that this information can be accessed and retrieved quickly. A document image management system puts an end to the paper problem by bringing information such as handwritten letters, photographs and forms online. Such information can be duplicated electronically and stored with other electronic forms of data such as text and graphics.

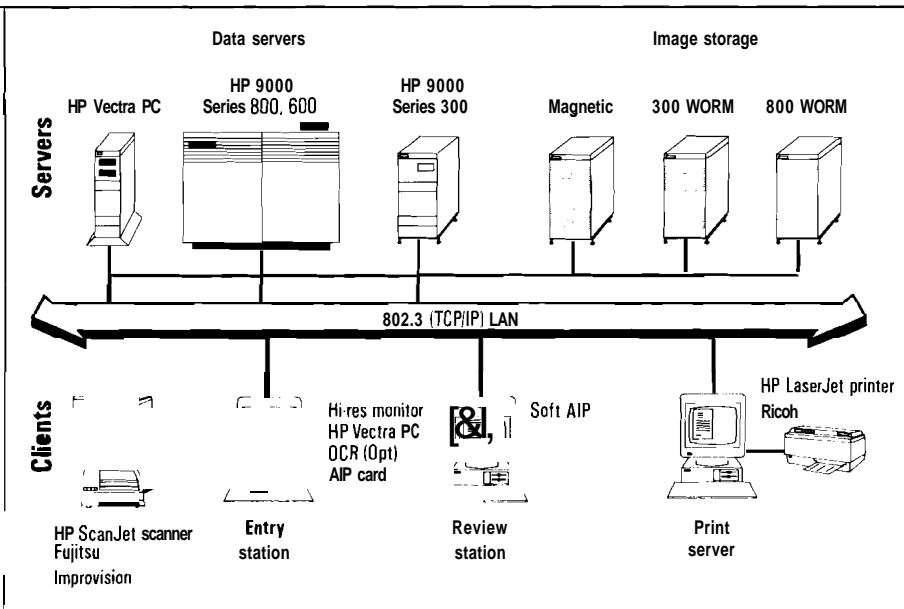
The productivity payoff of getting the right information quickly and easily has led to the document image management market being one of the fastest growing in the information technology industry.

The HP Advanced Image Management System (HP AIMS) brings paper based information online adding the electronic capture, manipulation, storage, and retrieval of hardcopy information to your existing business information systems.

HP AIMS is a combination of hardware, software, and networking components. It incorporates industry-standard hardware and software in a true client/server model. An HP 9000 or HP Vectra 386 PC UNIX system-based dataserer is connected via an industry-standard local area network to the client's HP Vectra PC running applications under MS-Windows and MS-DOS. Support for optical as well as magnetic storage media is provided.

*continued on next page*

## HP AIMS system overview



The real strength of HP AIMS is a set of powerful and flexible application development tools that enable image management applications to be generated easily and in a short time frame.

### Customized solution

Document image management solutions are unique to each organization and, in recognition of this, Hewlett-Packard has included advanced and flexible software development tools with the HP Advanced Image Management System. The tools enable VABs to build totally customized end-user solutions in less time than would normally be envisaged for this type of application.

### Application development tools

HP AIMS features some of the most powerful application development tools in the industry. Applications are developed on the PC using the Application Designer, a highly productive development environment in which user interfaces can be designed graphically and quickly.

Included in the toolset is a user interface (UI) builder that combines with Windows 4GL, a fourth-generation language, to produce an application program that communicates with the dataserer by making SQL calls over the LAN.

### UI builder

The UI builder enables the developer to design the user interface of the HP AIMS application. It dramatically changes the way in which user interfaces are designed. Typically, a developer would have taken the specification of a user interface, prototyped it, and then proceeded to write the code. This process is usually very time consuming. With the HP AIMS UI builder, these tasks are made a great deal easier. Modifications to interfaces can be made without the need for complete recompilation. Only linking is required.

### UI builder features

- **Application window** — the programmer can interactively design forms and dialogue boxes using standard objects such as menus, list boxes, buttons, and scroll bars from this window.

- **Palette** — objects to create menus, forms, and status boxes in the application window can be selected from the palette.
- **Libraries of standard designs** — once an object has been created, it can be saved and used over and over again. This enables menus, forms, and status boxes to be copied from other applications to the current application without having to recreate them.

### UI builder benefits

The general benefits of the UI builder include flexibility and ease of use. Specific benefits include:

- **A graphical 'What You See Is What You Get' interface** — enables developers to see right from the start what will be displayed to the end user when the application is run, thereby reducing development time.
- **The library of objects** — enables the developer to adopt consistency when creating the user interface.
- **The interface** — can be designed to be totally user friendly with the end user, thus reducing the learning curve.

### Windows 4GL

Windows 4GL is a state-of-the-art fourth-generation language that is derived from Informix 4GL. It is a block-structured language, that has nonprocedural syntax extensions for forms management, database management, and report writing.

### Windows 4GL features

- Enhancement to include support for large object data types, including image, voice, and video.
- All database accesses from within Windows 4GL programs are specified via SQL statements that follow the same syntax rules as other 4GL statements.

- Access is provided to an extensive library of some 350 functions. The functions include scan, scale, compress, decompress, display, crop, rotate, and print image data.
- A report writer is included. Special statements are provided to control the layout of report data on a laser printer. Facilities are provided to control margins, headers, trailers, fonts, and font sizes.

### Windows 4GL benefits

- No special skills such as 'C' or MS-Windows programming are needed to use the tool set effectively.
- The programming power of the tools enables applications to be developed in a shorter time frame.
- The function library permits rich and consistent user interfaces to be implemented with very little effort.
- Since Windows 4GL has been extended to include support for large objects, images are stored in the same database as normal structured data, which means data security and integrity remains high.

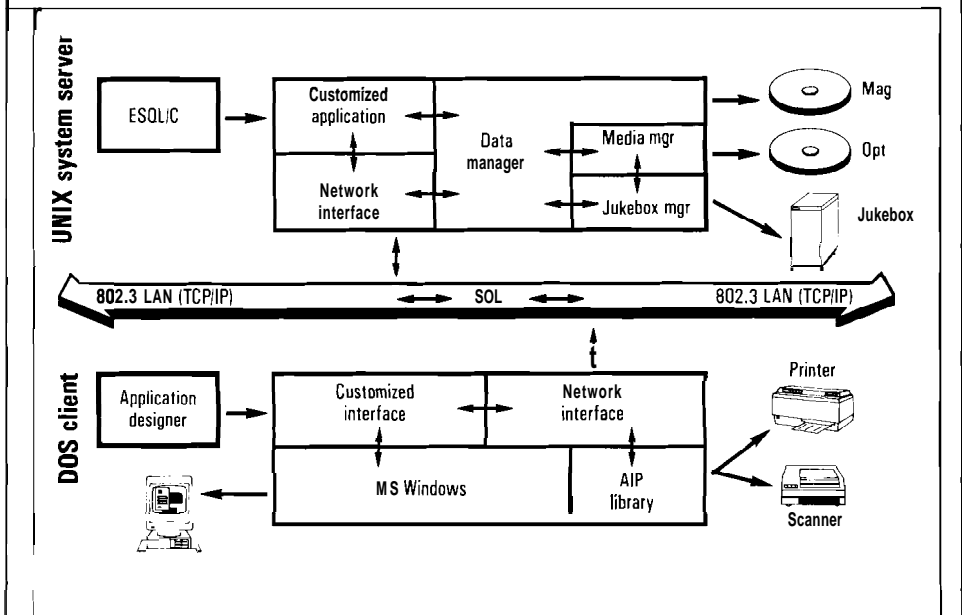
### Dataserver software

**DataManager** — A relational database management system based on SQL that has been extended to handle large objects.

**MediaManager** — Controls and monitors optical drives.

- **JukeboxManager** — An extension of the MediaManager that controls the optical jukeboxes.

### AIMS: software components



### Database development tools

Tools for accessing the database directly are available. ISQL is a tool for creating and modifying database structures. This tool is standard with the relational database management system.

Optionally, a programmer may wish to write programs that run on the dataserver. ESQL/C is a tool for the C programmer. It consists of a compiler and library functions. Embedded SQL allows preparation of dynamic queries and SQL database manipulation directly from the customized C programs on the dataserver.

### Literature

A technical data sheet (PIN 5959-9663) on the HP AIMS development tools is now available. Contact your HP representative for copies of this literature.

### Ordering information

HP AIMS is currently available as a Structured Solutions Package. There are three Structured Solutions Menus: two related to the dataserver components, and one for the client components.

Product No.	Description
B1608A	HP 9000 Model 375 with options for the ESQL/C upgrade, MediaManager, and JukeboxManager
B1609A	HP 9000 Series 8001600 with an option for ESQL/C
D2123A	HP Vectra PC with either the development pack, runtime pack or printserver pack



HP 9000

## New software support program for HP Advanced Image Management Systems

The HP AIMS Software Support Program features a choice of three server support services and one standard service for HP AIMS workstations — HP AIMS Server TeamLine (PIN H2078A+T00), HP AIMS Server ResponseLine (PIN H2079A+H00), HP AIMS Server BasicLine (PIN H2080A+L00), HP AIMS Server VAB BasicLine (PIN H2081A+L00), and HP AIMS Workstation (PIN H2082A+L00). The combination of server and workstation support provides a complete support solution for users' HP AIMS client/server environment software.

The software support is targeted towards HP AIMS developers and end users in the following transaction-driven industries: finance, government, pharmaceuticals, healthcare, and insurance.

### Features and benefits

HP Advanced Image Management Systems require either an HP 9000 or HP Vectra PC multiuser system server and HP Vectra PC workstations. HP AIMS Software Support services provide software assistance on all software products supported under the HP 9000 and HP Technical PC Software Support programs. In addition, several HP AIMS software products are supported including: HP DataManager, MediaManager, Application Software Run-time Pack, and Print Server software products. Any HP AIMS software products that are not supported under the standard services are supported via an application option. HP AIMS Software Support services provide software assistance for the HP products only. Support for the customized application is not included.

### Server support

HP AIMS Server services provide the same features as standard HP Software Support services. Users may choose from HP TeamLine's personalized technical assistance, HP ResponseLine's complete software maintenance, or HP BasicLine's self-support option.

### Workstation support

HP AIMS Workstation BasicLine extends the features of HP AIMS Server support to the workstation. Therefore, HP AIMS users receive comprehensive software support through a central system manager for all HP AIMS Workstation BasicLine PCs.

### Application option support

In addition to HP AIMS server and workstation services, HP AIMS Software Support program has four application options. These application options extend the HP AIMS server support service to those software products that are not supported under the standard services: Opt. OF8, Integrated PC Office; Opt. OLT, JukeboxManager; Opt. OLQ ESQ/L/C Upgrade; and Opt. OLW HP AIMS Developer Support.

### HP product-line positioning

HP AIMS Software Support services are designed specifically for HP Advanced Image Management Systems. These services provide support for the HP products only. Therefore, HP AIMS software support users must find an alternative support mechanism for their customized application.

HP AIMS services can be sold directly to HP VABs as a developer or end-user support solution. HP VABs can provide their customers with HP Operating System Updates and HP Software Updates

through the combination of HP AIMS Server VAB BasicLine, HP AIMS Workstation BasicLine, and HP Software Material Updates services.

### Configuration information

HP AIMS Software Support services use the same processor tiers as the HP 9000 and HP Technical PC programs. This program does not have its own HP Software Materials Update services. HP 9000 Operating System Update and HP 9000 Software Update services should be ordered for HP 9000 servers. HP Technical PC Software Updates should be purchased for HP Vectra PC multiuser system servers and workstations. Contact your HP representative for more information.

### Ordering information

Product No.	Description
H2078A+T00	HP AIMS Server TeamLine
H2079A+H00	HP AIMS Server ResponseLine
H2080A+L00	HP AIMS Server BasicLine
<i>Processor tier options for above products</i>	
Opt. OLF	For Model 870
Opt. OIA	For Models 8501855
Opt. OJB	For Model 845
Opt. OJC	For Model 645
Opt. OJD	For Models 82518321835
Opt. OJE	For Model 635
Opt. OJF	For Model 808
Opt. OKQ	For Models 36013701375, 815
Opt. AGA	PC UNIX
<i>Application options for products listed above</i>	
Opt. OF8	Integrated PC Office
Opt. OLT	JukeboxManager (not required for Opt. AGA)
Opt. OLQ	ESQLIC upgrade (not required for Opt. AGA)
Opt. OLW	HP AIMS Developer Support
H2082A+L00	HP AIMS Workstation BasicLine
<i>Processor tier option</i>	
Opt. OJT	PC DOS

Note: HP AIMS Server VAB BasicLine service (P/N H2081A+L00) is priced identically to HP AIMS Server BasicLine (P/N H2080A+L00).

## One spooling solution for all HP-UX computers

HP OpenSpoolIUX (PIN B1900A) is designed for both stand-alone multiuser systems *and* networked environments with workstations, servers, and multi-user systems on a LAN. Starting immediately, this is the new spooling solution for all HP 9000 Series 300/600/800 computers.

### True distributed spooling

Users of HP OpenSpoolIUX can trace their print or plot requests until final execution for last-minute corrections. End-users need not worry about the number of servers involved. The truly distributed spooling concept of HP OpenSpoolIUX provides users with effective, networkwide utilization of printers and plotters, while hiding network complexity.

### Outstanding functionality

HP OpenSpoolIUX serves users' technical and commercial applications equally well. For commercial environments, this implies extensive forms and fonts handling as demanded for fast changing print requests (paper size, number of copies, character sets, pre-printed forms), high-volume printing, scalable end-user involvement, and multiple security levels as requested when printing on checks. In technical environments, a single spooling solution for all prints and plots will replace numerous existing work-arounds. HP OpenSpool/UX exploits the latest features of print and plot devices currently supported on HP-UX. Future revisions will keep pace with newly available output peripherals from HP.

### Tailored user interface

To better accommodate the individual's level of expertise, HP OpenSpool/UX provides the choice of a command- or menu-driven user interface. In addition, context-sensitive on-line help facilities guide the user through the various tasks effectively and smoothly, ensuring short learning curves.

### Advanced system management characteristics

The evolving importance of network-wide system management is recognized in various forms. Facilities, such as single-point administration, one hour-up installation, the choice of centralized or distributed spooling management, and a rich set of default parameters to encourage and simplify initial installations by the user itself, are just a few of the benefits of HP OpenSpool/UX.

### Flexible integration

The "lp" emulation of HP OpenSpool/UX supports a smooth integration with users' existing applications. In the same way, customized filters and fonts are maintained. Also, users' PC integration via LAN Manager/X is perfectly complemented with HP OpenSpoolIUX.

### Built-in future

The product's modular architecture ensures adaptation to a wide range of different HP-UX topologies, including client/server environments. Core spooling functionality is based on a joint project between Digital Equipment

Corporation, the Massachusetts Institute of Technology (MIT), and Hewlett-Packard to lay the groundwork for cooperative computing in multivendor environments. The implementation of standards (X/Open, ECMA, ISO) at various levels anticipates future trends: increasing number of open systems, higher degree of networking, demand for better interoperability, and improved system management.

### Ordering information

HP 9000 Series 800 multiuser systems are considered separately from all other HP-UX computer systems, i.e., Series 300/600/800 workstations! servers.

For each Series 800 multiuser system, users order the base P/N B1900A and specify media, language, and model type (Options AHO...AH1).

- For any given number of Series 300/600/800 workstations/servers, users order the base P/N B1900A once, specify media and language, and then determine in which class the total number of systems falls by indicating the appropriate option (Option OAL...OA5).
  - Each user (site) will obtain a license certificate with a unique serial number when first purchasing HP OpenSpoolIUX.
- Entering P/N B1900A into the order system enforces the specification of media *and* language *and* system model through options.
- **Please note:** HP OpenSpoolIUX is one of the first products based on a run-time version (NCK) of HP/Apollo's Network Computing Services (NCS). For promotional reasons, HP will offer NCK for free, at least until the availability of HP-UX 8.0. As soon as defined, we will let you know about future plans regarding the pricing structure of HP OpenSpool/UX together with NCK.

*continued on next page*

## Media options

Option	Description
AA0	¼-inch cartridge
AA1	½-inch tape, 1600 bpi
AAH	Digital audio tape (DAT)

Until availability of HP-UX 8.0, DAT (Opt. AAH) is only available for HP 9000 Model 832S systems (on HP-UX 7.02).

In the first release, HP OpenSpool/UX will be offered in four local languages options:

Option	Description
default	English
ABD	German
ABF	French
ABE	Spanish
ABZ	Italian

The delivery of non-English languages is scheduled for the end of the year. Users who can't wait until availability of a particular local version can specify the English version first. They will automatically receive the localized product as soon as available.

## HP 9000 Series 800 multiuser systems

Option	Description
AH0	For Model 808S
AHA	For Model 815S
AE5	For Model 825S
AHB	For Model 832S
AE6	For Models 835S/SE
AEG	For Model 840S
AHC	For Models 845S/SE
AEH	For Model 850S
AHD	For Model 855S
AH1	For Model 870S

Users are eligible for a return credit when upgrading within the HP 9000 Series 800 multiuser systems. The order system will check for the serial number of the product formerly purchased by the user.

Option	Upgrading from
001	Model 808S
002	Model 815S
003	Model 825S
004	Model 832S
005	Models 835S/SE
006	Model 840S
007	Models 845S/SE
008	Model 850S
009	Model 855S

HP 9000 Series 30016001800, workstations, **client/server** models

Option	Description
OAL	Up to 8 SPU's
OAM	Up to 16 SPU's
OA2	Up to 64 SPU's
OAS	Site license

For more information, contact your HP representative.

HP 9000

## **HP 9000 Model 840S hardware accessories removed from HP Price List**

On June 1, the HP 9000 Model 840S hardware accessories were removed from the HP Price List. The HP 9000 Model 840S was removed from the price list on June 1, 1989, and at that time, entered into a 10-year support life.

The Model 840S hardware accessories that remained on the price list for one additional year have now been removed

from the list. All hardware accessories removed from the price list will enter into a 10-year support life. Any additional orders for the Model 840S hardware accessories will be accepted until July 1, 1990.

Some of the products listed below may be available from HP as refurbished equipment. For more information, contact your HP representative.

Product No.	Description
19748A	8 Mbytes ECC RAM
19733A	32 Mbytes ECC RAM
19746B	CIO expander
19744A	CIO channel adapter
19746A	Expansion module
19747A	Expansion bay
19742A	Floating-point PCA
19777A	Hardware manual set

## Also in this issue

<i>HP NewWave Office now shipping</i>	3
<i>HP 7962B, 7963B, and 97962B product discontinuance</i>	29

General

## Task Broker update

Task Broker is targeted towards users and prospects with HP 9000 Series 300, 600, and 800 systems, and Apollo 2500, 3500, 4500, and 10000 workstations.

### Technical specifications

For Task Broker to run on the Domain operating system, TCP/IP must be installed and running. Also, Task Broker must operate with either the Berkeley or System V system environment available to it. Task Broker is supported on SR 10.X and Prism releases.

### License restrictions

All licenses — 10, 50, and site — are restricted to a local area network. This was not clear in the previous Task Broker data sheet and has been updated in the new revision.

Media and documentation must be ordered separately. Licenses are restricted to a local area network. For the purpose of this license, a local area network is defined as all systems connected to the same physical Ethernet or Token Ring.

For more information, revised Task Broker technical data sheets (PIN 5952-2264) are available from your HP representative.

### Ordering information

Product No.	Description
BI740L	Task Broker license-to-use for up to 10 workstations/systems
BI741A	Task Broker license-to-use for up to 50 workstations/systems
BI742L	Task Broker site license-to-use
BI732A	Media and documentation for HP 9000 Series 300, 600, and 800 Task Broker software; requires prior or concurrent purchase of BI740/41/42L; must order Opt. AAO or AAI
Opt. AAO	Software on 5/8-inch cartridge tape for HP 9000 Series 300, 600, and 800
Opt. AAI	Software on 1/2-inch 1600 cpi 9-track tape for Series 300, 600, and 800
BI743A	Media and documentation for Apollo Series 2500, 3500, 4500, and 10000 Task Broker software; supports SR 10 and Prism releases; requires prior or concurrent purchase of BI740/41/42L; must order Opt. AAO
Opt. AAO	Software on 5/8-inch Domain cartridge tape for the Apollo Series 2500, 3500, 4500, and 10000

Apollo

## u i Domain Modula-2 for Apollo workstations

Domain Modula-2 (PIN LA96B) is a high-level language that offers the type-checking and control of Pascal while providing a modular framework for large system design and low-level system access. Modula-2 is also comparatively simple and small in size. It is targeted towards education and commercial users performing large-scale software development projects.

### Features

The Domain Modula-2 System is a set of high-performance, production-quality software tools for developing Modula-2 programs on Domain/OS workstations. Domain Modula-2 implements a superset of the full language definition (with the exception of concurrency and local modules).

Domain Modula-2 supports a two-pass compiler; a common optimizer/code generator shared with C, C++, Pascal, and FORTRAN 77, which enables these languages to produce call-compatible code; complete cross-language communication; and dynamic linking at run time to global, shared-library routines such as Domain system service calls, UNIX systems calls, and the C library. Domain Modula-2 is fully integrated with the Domain CASE environment, including Domain/DDE, DSEE, and DPAK.

### Benefits

The benefits of modular programming using Modula-2 include lower development and maintenance costs through code reliability, readability, and reuse. Designing and programming in Modula-2 is a more natural method for modeling and developing large complex systems.

*continued on next page*

## HP product-line positioning

Domain Modula-2 is an application development language product and is fully integrated into the Domain/OS programming environment. It has the same look and feel and follows the same command-line option and file-naming conventions as the other Domain compiler products.

## Technical specifications/configuration information

Domain Modula-2 runs on all Domain MC680X0-based workstations running Domain/OS SR10.1 or SR10.2.

## Ordering information

Product No.	Description
LA96B	Domain Modula-2 (single-node license, media, documentation)
LB960	Domain Modula-2 corporate licenses (quantity discounts: 2-9)

Apollo

## Update on the C++ product release

C++ is a general-purpose programming language designed by AT&T Bell Laboratories to support object-oriented programming. Domain/C++ and HP C++ are full implementations of the AT&T version 2.0 de facto standard. Both include superior toolsets, including symbolic debugging, standard C tools enhanced to support C++, AT&T class library support, and interlanguage calling.

The application areas most targeted for object-oriented application development include telecommunications, computer-aided design, computer-aided engineering (CAD/CAE), user interface design, oil industry applications, software development, and text management.

## Technical specifications/configuration information

Domain/C++ version 2.0 runs on all Domain MC680X0-based and PRISM-based workstations and requires Domain OS Version SR10.1(.p) or SR10.2(.p). HP C++ version 2.0 runs on HP 9000 Series 300, 600, and 800 workstations and requires HP-UX 7.0.

The following product literature is available worldwide through your HP representative:

- Domain/C++ product brief, P/N 5952-0746
- HP C++/HP-UX Language data sheet, P/N 5952-1568

Contact your HP representative for copies of this literature or for more information on C++ for the Domain MC680X0-based and PRISM-based workstations or C++ for the HP 9000 Series 300, 600, and 800 systems.

Apollo

## New version of NCS shipping

A new version of NCS will soon be shipping to users ordering the NCK (Network Computing Kernel) and NIDL (Network Interface Definition Language) products of NCS. NCK contains the runtime libraries and includes the location broker facility. The NIDL compiler creates the interface software that links remote procedures residing on systems connected together by a network. Version 1.5.1 of NCS incorporates the following major changes from previous versions:

- NCK and NIDL are now available for:
  - Sun-3 SunOS Rev. 4.0
  - DEC VAX/VMS Rev. 5.1 (requires Wollongong WIN/TCP 3.0 Ethernet connection)

- DEC VAX/Utrix Rev. 3.0
- HP 9000 HP-UX Rev. 7.0
- Apollo Domain/OS Rev. 10.2

Note that NCS is available from other vendors on a wide variety of hardware and O/S platforms. Hewlett-Packard will support NCS on the above configurations. Source code for NCS 1.5.1 is available to users under license (current users may upgrade to version 1.5.1) for platforms not currently supporting NCS.

NCK products for SunOS and ULTRIX systems now contain the replicatable version of the Global Location Broker daemon.

- Enhancements to Location Broker software provide support for a wider variety of network and internet enhancements.
- Enhancements to the NIDL compiler improve bulk data transfer performance.
- NCK and NIDL now support servers that export more than one version of an interface or implement an interface for more than one type.

These, other changes, and their implications for compatibility, are described further in the Release Document for each NCK and NIDL product. Contact your HP representative for more information.

Apollo

## Apollo Series 2500, 3500, and 4500 new pricing

### New pricing for Series 4500 workstation

The Apollo Series 4500 has been repositioned as the flagship product in the Apollo workstation family. Prices have been reduced by 7-40 percent (U.S. list). While entry pricing has been decreased, users will see the greatest cost savings in systems configured with 16 Mbytes or more

of memory and a 155-, 348-, or 697-Mbyte internal disk. The Series 4500 is targeted towards EDA, MCAE/MCAD, CASE, AI, EP, scientific, and engineering users who need high performance today and the most economical upgrade to the MC68040 over the next few months. The Series 4500 would also be the recommended system for users who have a current or future need for the 40-plane Desktop Visualization System. With the new aggressive pricing, the Series 4500 is the "best buy" workstation for most users when choosing from the Apollo workstation family.

#### **New pricing for Series 3500**

The repriced Series 3500 remains the industry's lowest-priced color workstation. This system complements the Series 2500, which is the industry's lowest-cost monochrome workstation. The entry prices for the Series 3500, except for the "F" and the 8-plane DVS options, have not been lowered. However, the pricing for systems configured with at least 8 Mbytes of memory and a 155-, 348-, or 697-Mbyte disk have been reduced by 10-20 percent (U.S. list). The Series 3500 is targeted towards EDA, MCAD, CASE, EP, scientific, and engineering users who need low-cost color workstations or who need the bus-expansion capability that the Series 2500 does not provide.

#### **New pricing for Series 2500 workstation**

The repriced Series 2500 retains its position as the lowest-priced workstation in the industry. Prices for systems configured with at least 8 Mbytes memory and an internal disk have been reduced by 8-18 percent (U.S. list). Diskless 4-Mbyte systems and 4-Mbyte systems with 100-Mbyte disks are now nondiscountable. The only exception is a 20 percent discount for universities purchasing a Series 2500 configured with 4 Mbytes main memory and a 100-Mbyte disk. The Series 2500 is targeted towards CASE, EP, and office automation users.

Contact your HP representative for more information.

*Apollo*

## **MC68040 board upgrade**

### **Motorola's 68040: more of a good thing continues to get better**

During the last 10 years, Motorola's MC680X0 microprocessor family has established the largest 32-bit computing base in existence. Billions of dollars have been invested in 68000-based hardware and software. The family offers architectural versatility, software compatibility across all processors, continuous innovations in architecture and performance, a long-life architecture, and assured availability through volume manufacturing. It is a technology with both a history and a future.

Now, with Motorola's new 68040 chip, Hewlett-Packard offers a dramatic performance improvement for the Apollo workstation family. Coupled with the performance of Motorola's 68040 upgrade is our extremely attractive new Apollo workstation prices.

On the performance side, HP is introducing a CPU-board upgrade for the Series 3500, Series 3500 Model 3550, and Series 4500 workstations (PIN A1631A). This board-swap upgrade is based on the 25-MHz version of the 68040 microprocessor. Motorola has specified this microprocessor's performance at 20 MIPS and 3.5 Mflops (DP Linpack).

### **Motorola's 68040: plug it in and drive**

The Motorola 68040, the newest member of the 68000 family, seamlessly supports existing software and provides full compatibility with the earlier members of the family. The underlying circuitry has been totally redesigned and represents a big leap over the 68030.

Yet, in redesigning the 68040 for performance, Motorola has ensured that the new chip is fully compatible with the 680X0 family. Progress won't stop here; Motorola is already planning the 68050.

The 68040 is a fast, highly integrated 32-bit microprocessor that combines RISC-like integer performance with floating-point power beyond that of any standard processor. Motorola anticipates that 95 percent of the 68030 customer base will move up to the 68040. Users of the 68000 family are ensured of preserving their capital investment while being able to take advantage of continuous innovations in architecture and performance.

The 68040 designers put everything essential to a central processor on the chip itself: an integer unit, a floating-point unit, two sizable cache memories, two memory management units, and bus interface unit. This goes well beyond any previous 32-bit processor. Each of the units can be regarded as a separate machine. Each is highly intelligent and can function independently of the others, giving the microprocessor an unprecedented degree of parallelism. The MC68040's bus interface unit alone is as sophisticated as an entire 68000 microprocessor.

### **Major redesign with full compatibility**

As a completely redesigned chip, the MC68040 incorporates a record-breaking 1.2 million transistors, almost four times the MC68030, making it the most sophisticated processor on the market (by contrast, the 68000 chip that debuted in 1979 had only 68,000

*continued on next page*

transistors). It takes full advantage of 0.8 micron high-performance complementary metal-oxide semiconductor (HCMOS) technology. Because all of the chip's processing units are streamlined for maximum efficiency and operate in parallel, it can process an instruction every 1.3 clock cycles — competitive with RISC-based chips.

## Ordering information

Product No.	Description
A1631A	25-MHz MC68040 board upgrade for Apollo Series 3500 and 4500
Opt. OH6	Credit for return of DN/DSP3500 CPU board
Opt. OH7	Credit for return of DN/DSP3550 CPU board
Opt. OH8	Credit for return of DN/DSP4500 CPU board
Opt. OH9	Special credit for Series 3500 or 4500 systems shipped after March 1, 1990
LFZ70BAD	PSK V10.3 on cartridge tape
LFZ70BAD	PSK V10.3 on magnetic tape

## Apollo

### *Basic training on Domain networking products now offered*

Domain Networking Solutions Fundamentals course (course number SR120) is finished and now available for users who desire basic training on the impressive array of networking products for DN series platforms. This self-paced workbook was designed to help users better understand Domain networking products and technologies.

**Note:** The prerequisite for course number SR120 is the Workstation Primer, course number SR122 (listed below).

For those not familiar with any of the Apollo Domain networking capabilities, the following reference materials are also available:

- Workstation Primer, SR122, PIN A1643A-90004  
Apollo TECHnet, PIN 5952-0743
- Domain TCP/IP, PIN 5952-0279
- Apollo SNA, PIN 5952-0169
- Apollo X.25, PIN 5952-0026
- Apollo's Communications Solutions, PIN 5952-0343

All of the items listed above can be ordered through your HP representative.

Once you have completed the Domain Networking course, you may want to take an exam in order to obtain course credit. Test instructions along with an OCR answer sheet are included in your workbook. Scores of 80 percent or higher will qualify you for course credit.

## HP-UX

### *DZO Real Time Interface card for HP 9000 Series 300 system*

The new DIO Real Time Interface (DIOIRTI) card will help users develop real-time applications more quickly for HP 9000 Series 300 HP-UX systems. The DIOIRTI card plugs into the DIO backplane of an HP 9000 Series 300 host system and acts as coprocessor to offload the real-time processing needs from the host.

In addition to providing very fast response times, the DIOIRTI card also relieves the host processor of the many high CPU overhead details that are often encountered in real-time applications, such as the processing of special device protocols during communication with factory floor devices.

Real-time applications for industrial automation, DAC, and communications can be developed quickly on the host system, using the optional developer's kit, and then downloaded to the DIO/RTI card to run on the pSOS real-time operating system. The two SBX front-plane connectors provide access to over 200 industry-standard SBX modules, thereby minimizing the need for custom hardware development.

#### Features and benefits

- 16-MHz 80C186 microprocessor for faster response
- 1 Mbyte of memory for larger applications
- two SBX front plane connectors allow communications with multiple devices
- pSOS real-time, multitasking operating system

The DIOIRTI card joins the CIO/RTI card (for Series 800 with CIO backplane) as the second member of the RTI family. The DIOIRTI card provides real-time capabilities with an industry-standard operating system such as HP-UX on a lower cost operating system such as HP-UX HP 9000. Series 300 systems currently using the DIO/RTI backplane include the Models 332, 350, 360, 370, and 375.

Contact your HP representative for more information and to get a copy of the DIOIRTI data sheet (PIN 5954-8035)

#### Ordering information

Product No.	Description
98297A	DIO/RTI card with software and manuals
Opt. CBO	Deletes manuals
Opt. OCC	RTI software update (deletes card)
Opt. AAO	RTI software on CS-80 cartridge
Opt. AAI	RTI software on 1600 bpi tape
98298A	DIOIRTI developer's kit
Opt. AAO	RTI developer software on CS-80 cartridge
Opt. AA1	RTI developer software on 1600 bpi tape
98298L	Right to copy developer software
28672A	8-channel MUX SBX card
Opt. 003	Add DIO cable and J-box
Opt. 004	Add DIO unterminated cable

HP-UX

## HP announces Asian HP-UX products for HP 9000 Series 300 and 800 systems

HP-UX Release 7.0 Language upgrade products are now available. These products include the manuals (online and hardcopy) and system messages for Korean and traditional and simplified Chinese languages. HP-UX Language upgrade products are targeted towards HP 9000 HP-UX users (software developers, system administrators) with local language requirements.

#### Features and benefits

HP-UX Language upgrade products provide localized system messages and documentation enabling users to be more effective in their use and understanding of the HP-UX system. The documentation set includes on-line reference manuals, select hard-copy user guides for both the Series 300 and 800 computer systems.

The HP-UX Language upgrade products, which require prior or concurrent purchase of P/Ns 98594L or 98595L for HP-UX 7.0, provide a local language solution that has the same level of reliability and support as the original English product. **Note: appropriate NLIO products are required to access or input native language characters.**

#### Product-line positioning

HP-UX Language products offer significant enhancements to HP's Far East Native Language Support products. Combined with country-specific NLS/NLIO products, the HP-UX Language products position HP as a premier local language computer supplier, with the most complete UNIX system-based native language environment. Combined with the broadest range of UNIX system platforms in the industry, the HP-UX Language upgrade and NLS products provide unique and winning differentiators. Contact your HP representative for more information.

#### Ordering information

Product No.	Description
98895AX	Korean update for HP 9000 Series 300
Opt. 022	¼-inch media
98895AW	Traditional Chinese upgrade for HP 9000 300, 800
Opt. 022	¾-inch media for Series 300
Opt. AA1	¾-inch media for Series 800
Opt. OAU	Advanced user documentation
98895AY	Simplified Chinese upgrade for HP 9000 Series 300
Opt. 022	¼-inch media
98594AY	Simplified Chinese bundle for HP 9000 Series 300
Opt. 022	¾-inch media



HP-UX

## ALLBASE/NET for the HP 9000 Series 300 system

Listed below are the new options for ALLBASEINET for the HP 9000 Series 300 (PIN 98884L). Previously, there were no options.

Product No.	Description
98884L	ALLBASEINET for HP 9000 Series 300
Opt. OAN	Single-user license
Opt. OAL	1-8 user license
Opt. OAM	1-16 user license
Opt. OA0	1-32 user license
Opt. OA2	1-64 user license
Opt. OA5	Unlimited user license
Opt. OH0	Upgrade credit for 1 user
Opt. OH1	Upgrade for 1-8 users
Opt. OH2	Upgrade for 1-16 users
Opt. OH3	Upgrade for 1-32 users
Opt. OH4	Upgrade for 1-64 users

Now you can order ALLBASEINET for the HP 9000 Series 300 based on the number of workstations connected on the LAN, independent of being disk or diskless. It is still necessary to purchase an ALLBASEISQL development or run-time license for each workstation.

For additional information on ALLBASEISQL or ALLBASEINET, please contact your HP representative.

HP-UX

## HP 9000 Series 300 SPU restructuring

Effective June 1, Hewlett-Packard is changing its HP 9000 SPU structure to reflect its new product option numbering scheme. Listed at right is the information you'll need when ordering HP 9000 SPUs.

Old product-based structure		New option-based structure		
Product No.	Description	Product No.	Opt.	Description
98561A	Model 310 SPU (English)	98561A	ABA	Model 310 SPU (English)
98561AD	Model 310 SPU (German)	98561A	ABD	Model 310 SPU (German)
98561AE	Model 310 SPU (Spanish)	98561A	ABE	Model 310 SPU (Spanish)
98561AF	Model 310 SPU (French)	98561A	ABF	Model 310 SPU (French)
98561AJ	Model 310 SPU (Katakana)	98561A	ABJ	Model 310 SPU (Katakana)
98561AZ	Model 310 SPU (Italian)	98561A	ABZ	Model 310 SPU (Italian)
98562A	Model 330 SPU (English)	98562A	ABA	Model 330 SPU (English)
98562AD	Model 330 SPU (German)	98562A	ABD	Model 330 SPU (German)
98562AE	Model 330 SPU (Spanish)	98562A	ABE	Model 330 SPU (Spanish)
98562AF	Model 330 SPU (French)	98562A	ABF	Model 330 SPU (French)
98562AJ	Model 330 SPU (Katakana)	98562A	ABJ	Model 330 SPU (Katakana)
98562AZ	Model 330 SPU (Italian)	98562A	ABZ	Model 330 SPU (Italian)
98562B	Model 350 SPU (English)	98562B	ABA	Model 350 SPU (English)
98562BD	Model 350 SPU (German)	98562B	ABD	Model 350 SPU (German)
98562BE	Model 350 SPU (Spanish)	98562B	ABE	Model 350 SPU (Spanish)
98562BF	Model 350 SPU (French)	98562B	ABF	Model 350 SPU (French)
98562BJ	Model 350 SPU (Katakana)	98562B	ABJ	Model 350 SPU (Katakana)
98562BZ	Model 350 SPU (Italian)	98562B	ABZ	Model 350 SPU (Italian)
98572A	Model 332 SPU (English)	98572A	ABA	Model 332 SPU (English)
98572AD	Model 332 SPU (German)	98572A	ABD	Model 332 SPU (German)
98572AE	Model 332 SPU (Spanish)	98572A	ABE	Model 332 SPU (Spanish)
98572AF	Model 332 SPU (French)	98572A	ABF	Model 332 SPU (French)
98572AJ	Model 332 SPU (Katakana)	98572A	ABJ	Model 332 SPU (Katakana)
98572AZ	Model 332 SPU (Italian)	98572A	ABZ	Model 332 SPU (Italian)
98574B	Model 375 SPU (English)	98574B	ABA	Model 375 SPU (English)
98574BD	Model 375 SPU (German)	98574B	ABD	Model 375 SPU (German)
98574BE	Model 375 SPU (Spanish)	98574B	ABE	Model 375 SPU (Spanish)
98574BF	Model 375 SPU (French)	98574B	ABF	Model 375 SPU (French)
98574BJ	Model 375 SPU (Katakana)	98574B	ABJ	Model 375 SPU (Katakana)
98574BZ	Model 375 SPU (Italian)	98574B	ABZ	Model 375 SPU (Italian)
98579A	Model 360 SPU (English)	98579A	ABA	Model 360 SPU (English)
98579AD	Model 360 SPU (German)	98579A	ABD	Model 360 SPU (German)
98579AE	Model 360 SPU (Spanish)	98579A	ABE	Model 360 SPU (Spanish)
98579AF	Model 360 SPU (French)	98579A	ABF	Model 360 SPU (French)
98579AJ	Model 360 SPU (Katakana)	98579A	ABJ	Model 360 SPU (Katakana)
98579AZ	Model 360 SPU (Italian)	98579A	ABZ	Model 360 SPU (Italian)
98579B	Model 370 SPU (English)	98579B	ABA	Model 370 SPU (English)
98579BD	Model 370 SPU (German)	98579B	ABD	Model 370 SPU (German)
98579BE	Model 370 SPU (Spanish)	98579B	ABE	Model 370 SPU (Spanish)
98579BF	Model 370 SPU (French)	98579B	ABF	Model 370 SPU (French)
98579BJ	Model 370 SPU (Katakana)	98579B	ABJ	Model 370 SPU (Katakana)
98579BZ	Model 370 SPU (Italian)	98579B	ABZ	Model 370 SPU (Italian)

HP-UX

## HP 9000 Series 300 MC68020-based workstation obsolescence

Effective May 1, the following Series 300 MC68020-based workstations were removed from the HP Price List.

Final U.S. orders will be accepted through May 31, 1990. Final interna-

tional orders will be accepted through July 31, 1990. Final shipments will be made by January 31, 1991. Contact your HP representative for more information.

Product No.	Description	Recommended replacement Product No.	Description
98561B	Model 320 SPU	98574B	Model 375 SPU
98561C	Model 320U SPU	98574B	Model 375 SPU
98563B	Model 318M monochrome workstation	98563E	Model 340M
98564A	Model 319C+ color workstation	98564C	Model 340C+
98573A	Model 319SRX workstation	98573C	Model 340SRX
98580S	Model 330MMA monochrome MA system	98563H	Model 345MH
98581S	Model 330CMA color MA system	98578H	Model 345CH
98582E	Model 350M monochrome workstation	985895	Model 375MH
98582S	Model 330M monochrome workstation	98563H	Model 345MH
98583E	Model 350C color workstation	985835	Model 375C+
98583S	Model 330C color workstation	98564H	Model 345C+
98586E	Model 350CX color workstation	985885	Model 375CH
98587E	Model 350SRX workstation	985875	Model 375SRX
98588E	Model 350CH 2D color workstation	985885	Model 375CH
98588S	Model 330CH 2D color workstation	98578H	Model 345CH
98589E	Model 350MH monochrome workstation	985895	Model 375MH
98589S	Model 330MH monochrome workstation	98563H	Model 345MH

HP-UX

## HP 9000 Model 375 does not support Pascal/WS

The latest HP 9000 Workstations Configuration Guide, PIN 5954-8594, mistakenly indicates on page 6-15 that Pascal/WS is supported in the HP 9000 Model 375 SPU. Support will begin with Pascal 3.23 this month, but Pascal is *not* and *will not be* supported on the Model 375 until then. To avoid confusion, please cross out the Pascal/WS box in the Operational Requirements table on page 6-15 of your reference copy of the HP 9000 Workstations Configuration Guide.

HP-UX

## HP 9000 Series 500 SRM product discontinuance

Effective June 1, the following four products that enable the HP 9000 Series 500 to talk on a shared resource management (SRM) network were discontinued.

Product No.	Description
50961A Opt. 500	Coax adapter and interface hardware
50961U Opt. 500	Coax upgrade kit
97058A	SRM software
98694A	SRM Access Utilities for HP-UX

These products were removed from the June, 1990 HP Price List. Final orders will be accepted until July 31 (U.S.) and September 30 (international). Support life will continue until July 1, 1995.

Desktop

## HP introduces the HP Vectra 286/12 PC

The HP Vectra 286112 PC is Hewlett-Packard's new entry-level personal computer. The HP Vectra 286112 PC replaces the successful 286-based HP Vectra ES/12 PC. The HP Vectra ES/12 has been HP's mainstream PC since its introduction in September of 1987. As a result of the significant price/performance improvements, the HP Vectra 286112 PC is expected to be HP's entry-level PC through 1991.

### Features and benefits

- **12-MHz 80286 microprocessor with zero wait-state memory** — Delivers power and speed to handle demanding business applications, such as spreadsheets, business graphics, databases, and sophisticated word processing.
- **1 Mbyte of RAM standard (with remapping)** — Runs new-generation applications, such as Lotus 1-2-3 Version 3.0, requiring 1 Mbyte of memory. Remapping provides applications with 1 Mbyte of fully usable memory.
- **Up to 8 Mbytes of memory runs at 12 MHz** — Any application, no matter how large, runs faster. The HP Vectra 286112 PC has a memory expansion board (PIN D2401A) that occupies a proprietary slot on the motherboard, allowing up to 8 Mbytes of memory on the board to be accessed at 12 MHz versus the I/O bus speed of 8 MHz.

**High-performance hard disk drives** — The 42- and 84-Mbyte disk drives have an average access time of 19 ms. Programs boot faster and performance on disk-intensive applications such as databases and word processing is improved.

- **Improved video technology** — Quick screen updates for video-intensive applications, especially Microsoft-Windows applications with 73-200 percent better video performance relative to the HP Vectra 286112 PC with VGA card when testing video performance with PC *Magazine* Lab Benchmark Series 5.0.
- **Integrated video** — Supports both industry-standard VGA and Super VGA. Protects users' investment by supporting the current industry-standard video (VGA), which is also fully backward compatible with early

industry-standard modes (MDA, CGA, EGA, Hercules). Super VGA (800 x 600 resolution) is ideally suited for graphical interface environments such as MS-Windows, GEM, and HP NewWave, as well as desktop publishing, presentation graphics, and CAD software.

**Mini-DIN keyboard and mouse** — Fully compatible with new standards. Further enhances compatibility with today's industry-standard PC hardware, software, and networks.

**Highly integrated motherboard** — The HP Vectra 286112 PC has 35 percent fewer components than the ES/12. Fewer chips, less components, less connections, and less heat equals high reliability.

Contact your HP representative for more information.

### Ordering information

Product No.	Description	Hard disk	Disk controller	Video adapter
D2467A	HP Vectra 286112 PC Model 1, 3 1/2-inch flexible disk	None	None	Super VGA (integrated)
D2460A	HP Vectra 286112 PC Model 1, 5 1/4-inch flexible disk	None	None	Super VGA (integrated)
D2462A	HP Vectra 286112 PC Model 20, 3 1/2-inch flexible disk	20 Mbytes	ST-506	Super VGA (integrated)
D2461A	HP Vectra 286112 PC Model 20, 5 1/4-inch flexible disk	20 Mbytes	ST-506	Super VGA (integrated)
D2464A	HP Vectra 286112 PC Model 40, 3 1/2-inch flexible disk	42 Mbytes	Embedded-AT	Super VGA (integrated)
D2463A	HP Vectra 286112 PC Model 40, 5 1/4-inch flexible disk	42 Mbytes	Embedded-AT	Super VGA (integrated)

Desktop

## ***New 256-Kbyte memory upgrade kit for HP Super VGA board***

The 256-Kbyte HP Super VGA memory upgrade kit (PIN D2383A) is intended for users who need to push their HP Super VGA Board to its highest resolution capabilities. It provides users with 16 colors in the 1024x768 high-resolution mode, and with 256 colors in the 640x480 resolution mode (VGA standard). The 1024x768 mode is interlaced; this allows the use of an interlaced monitor, making the upgraded HP Super VGA board an affordable, entry-level HP video solution for PC-CAD engineers. The VGA mode with 256 colors is intended to satisfy office users with demanding graphics needs.

Upgrading the HP Super VGA Board (PIN D2382A) from 256 Kbytes to 512 Kbytes with the memory upgrade kit is easy. Users simply need to identify the memory sockets on the Super VGA board that are designed to receive the upgrade kit, and then install the eight 256-Kbit memory modules of the kit. Installation directions are included in the HP Super VGA Board manual, or in the PC user manual.

Desktop

## ***New MaxFlex pricing***

Effective May 1, the price of selected HP Vectra PC hard disk and video accessories was reduced by as much as 30 percent. The reduced PC and accessory prices is the first step in the implementation of HP's new MaxFlex pricing strategy. MaxFlex pricing is a simple concept offering dealers large savings in inventory carrying cost, greater stocking flexibility, and improved availability.

Under MaxFlex pricing, dealers are given the choice of either ordering and stocking fully configured PC/hard disk bundles, or building up PC systems starting with base Model 1 systems and installing supported HP hard disk drives and VGA cards. The cost to the dealer is the same in either case. MaxFlex pricing will be in effect on the HP Vectra 286112 (except the Model 20), Vectra QS/16s, Vectra QS/20, and Vectra 486 PCs (except the Model 150).

Under MaxFlex pricing, any base Model 1, plus any supported hard disk accessory, plus any supported video adapter, equals the price of any pre-configured HP Vectra PC model. For example, an HP Vectra QS/16s PC Model 1 (PIN D1481B, \$2,799 U.S. list), plus an 84-Mbyte hard disk accessory (PIN D1666A, \$1,199 U.S. list), plus an HP VGA card (PIN D1180A, \$399 U.S. list), equals an HP Vectra QS/16s PC Model 80 (PIN D1488A, \$4,399 U.S. list).

More information on the new MaxFlex pricing will be available in future issues.

## **Ordering information**

Product No.	Description
D1665A	42-Mbyte hard disk drive
D1666A	84-Mbyte hard disk drive
D1180A	HP VGA card
D2382A	HP Super VGA board
D1481B	HP Vectra QS/16s PC Model 1 with 5¼-inch flexible disk drive

Desktop

## ***New HP Vectra PC shipping container***

Hewlett-Packard has simplified the shipment process of the HP Vectra PC. In May, HP began shipping desktop HP Vectra PCs (QS models) in a single shipping container instead of the three boxes that were previously used.

Desktopside HP Vectra PCs (RS and Vectra 486 models) will move to a single shipping container this month. The HP Vectra ES/12 PC will continue to ship in three boxes.

### **Benefits**

- simplifies inventory (dealer can stock one box instead of three)
- minimizes confusion by printing PC bundle product number on outside of box
- improves ease of use — PC components/documentation/cables are easily located
- assures delivery of a complete solution (no components "lost in the mail")

The new desktop shipping container (25 $\frac{3}{8}$  x 24 $\frac{3}{16}$  x 15 $\frac{1}{4}$  inches) is slightly larger than the current SPU container (25 $\frac{3}{8}$  x 24 x 15 $\frac{3}{8}$  inches). The desktopside container will be slightly smaller.

*continued on next page*

**Configuration information added to rear label**

A change planned for the third calendar quarter is the addition of the configuration information to the rear label (the label that calls out the regulatory and serial number information). This label will replace the "Identifying your Computer" section of the manual for information on the type of video, hard disk drive, floppy disk drive, etc. By providing the configuration information on the rear label of the PC, users will be able to:

- quickly access configuration information needed to use the PC's setup program
- be assured this information is always easily accessible (no longer will users need to worry about how to get this information if the manual is lost or misplaced)

*Desktop*

***HP Vectra PC  
memory upgrade kit  
price reduced***

Effective May 1, all memory upgrade accessories for the HP Vectra PC family were reduced by about 23 percent per megabyte. The change affects all memory upgrade kits for the HP Vectra 286112, Vectra QS/16s, Vectra QS/20, Vectra RS, and Vectra 486 PCs.

HP memory upgrade kits offer users uncompromising quality and assurance. Components selected for use in HP memory upgrade kits are tested across the same wide temperature and voltage ranges as the HP Vectra PCs. Memory access time is the most widely known

memory specification, however, every memory component qualified for HP memory upgrade kits must meet over 40 parameters tested across the full range of HP Vectra PC operating conditions. This comprehensive testing and component qualification process ensures optimal system performance, reduction of soft errors, and minimization of premature memory component failures.

Memory chips used in HP memory upgrade kits are prescreened by our memory chip vendors. Memory components available from alternate sources may not meet HP's exacting standards. HP memory upgrade kits ensure top performance and reliability for the life of the HP Vectra PC system.

**Ordering information**

Product No.	Description
D1354A	2-Mbyte memory upgrade kit
D1640A	1-Mbyte memory upgrade kit
D1642A	4-Mbyte memory upgrade kit
D2150A	1-Mbyte memory upgrade kit (486)
D2151A	4-Mbyte memory upgrade kit (486)
D2152A	8-Mbyte memory upgrade kit (486)

*Desktop*

***Multimode monitor  
obsolescence June 1***

As of June 1, the 12-inch monochrome video display monitor (PIN 35731A) and the 12-inch color video display monitor (PIN 35741A) will be removed from the HP Price List.

The monitors will be replaced by P/Ns 35731BM and 35741BM, respectively. There is no change to the feature set or functionality; the BM versions have a worldwide power supply and come with a U.S. power cable.

Due to a delay in removing these products from the price list and the fact that the 35731A and 35741A are going to be serviced with the BM versions of these monitors, there is no inventory of the 35731A or 35741A monitors. Therefore, please make sure to order the 35731BM and the 35741BM versions.

**Also in this issue**

- Introducing HP LAN  
Manager/X for 386/486  
servers* **29**
- HP OpenView Windows  
available on non-HP PCs* **31**

## Peripherals

General

### HP 45911A graphics tablet obsolescence

The HP 45911A HP-HIL graphics tablet was removed from the HP Price List on May 1, 1990. It has been replaced by the HP 45911C graphics tablet, which was introduced on February 1, 1990. The HP 45911C graphics tablet has all the same features as the HP 45911A and also includes a four-button cursor as well as a stylus. Contact your HP representative for more information.

General

### HP 64100A development station discontinuance plan

Hewlett-Packard will discontinue the HP 64100A development station and several related products on February 1, 1991.

A substantial price increase on these products is planned for July 1, 1990. A letter is being sent to HP 64100A installed-base users explaining the discontinuance plan and price increase. The plan affects the following products:

Product No.	Description
64100A	Development station
Opt. 041	Installed flexible disk drive and controller
64100AF	Operating software for 64100A
64100B	64100A station bundle, including 64100A/041 station with operating software, HP 7957B 80-Mbyte disk drive, and 64302A emulation bus analyzer
Opt. 001	80286 emulation environment
64941A	Flexible disk drives and controller for 64100A

If you have any questions about the HP 64100A discontinuance plan, please contact your HP representative.

Mass Storage

### HP Series 6000 Models 330S and 660S selection

The decision of which new disk products to purchase, either HP-IB or SCSI, should not be difficult when based on the results of the latest

disk performance testing. The new SCSI HP Series 6000 Models 330S (PIN C2212A) and 660S (PIN C2213A) are the clear choice.

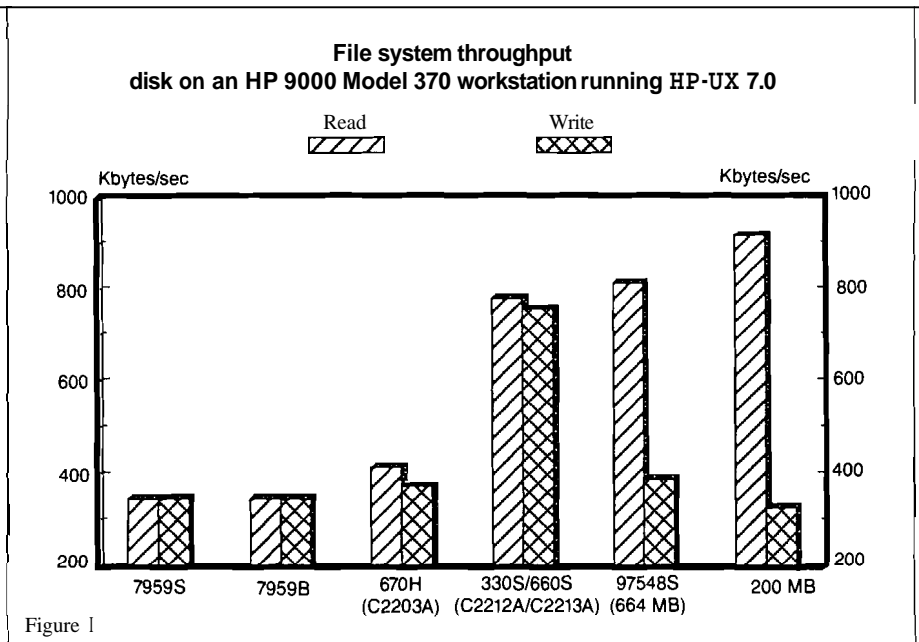


Figure 1 compares the file system throughput for the new Series 6000 Models 330S and 660S with current HP-IB and SCSI disk drives, the new 670-Mbyte HP-IB disk drive, and the 3401350 integrated 200-Mbyte disk drive. The results from Figure 1 show that, on average, the new SCSI mass storage systems will deliver 120 percent read/write throughput improvement over current HP-IB and SCSI disk drives; 96 percent read/write throughput improvement over the new

670-Mbyte HP-IB disk drive; 17 percent less read performance, but 130 percent greater write performance over the integrated 200-Mbyte disk drive.

The performance test run was a sequential read/write benchmark, utilizing an HP 9000 Model 370 running HP-UX 7.0. (Note: The 200-Mbyte internal disk is not available for purchase in this configuration. The test was run for comparison purposes only.)

*continued on next page*

Mass Storage

**HP Series 6000 disk storage systems price increase**

Effective June 1, the prices of the HP Series 6000 Models 335H, 670H/XP/FL, and 1.34FL disk storage systems were increased. The new price increases range from 1 to 11 percent (U.S. list). Listed below are the products affected.

Product No.	Description
C2200A	HP Series 6000 Model 335H — 335-Mbyte disk drive with HP-IB
C2201A	HP Series 6000 Model 670FL — 670-Mbyte disk drive with HP-FL Opt. IBG PBus only, add-on disk drive
C2202A	HP Series 6000 Model 670XP — 670-Mbyte disk drive with HP-IB cache
C2203A	HP Series 6000 Model 670H — 670-Mbyte disk drive with HP-IB
C2204A	HP Series 6000 Model 1.34FL — 1.34-Gbyte disk drive with HP-FL Opt. IBG PBus only, add-on disk drive
C2282A	Integration kit

*Note: Hewlett-Packard installation is required on all HP-FL products. This is included in the price.*

Contact your HP representative for more information.

Mass Storage

**1/2-inch tape drive price reductions**

On May 1, 1990, Hewlett-Packard reduced the price of its highest-performance, highest-capacity 1/2-inch tape drive, the HP 7980XC, and the kit (P/N 88705A) that upgrades the HP 7980A to the 7980XC.

Contact your HP representative for more information.

Khornerstone performance

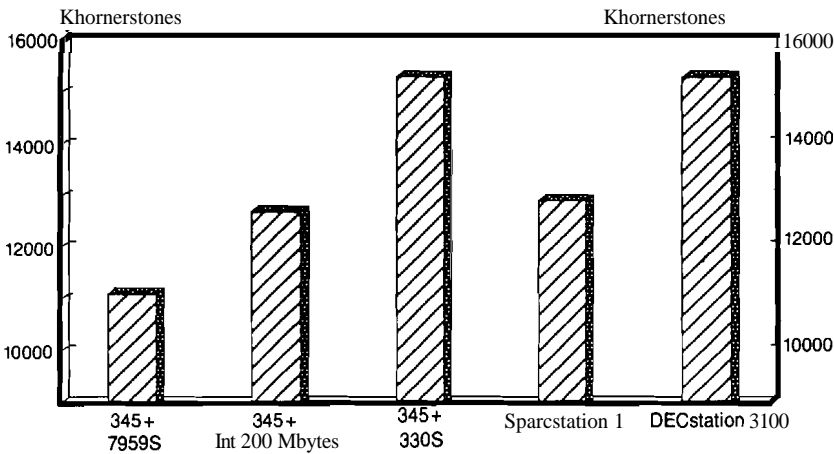


Figure 2

Figure 2 shows the results of Khornerstone performance testing of an HP 9000 Model 345 with various disk configurations versus key competitors. The HP 9000 Model 345 with an HP Series 6000 Model 330S mass storage system delivers the highest Khornerstone rating of all the tested

configurations with 21 percent greater Khornerstone performance over the integrated 200-Mbyte disk; 19 percent greater Khornerstone performance over the Sparcstation 1.

Contact your HP representative for more information.

Mass Storage

**HP Series 6000 disk storage systems as add-on disks**

The new disk storage systems for HP computers offer an excellent value as add-on disks for installed base systems. Depending upon the number of systems in a shop and the disk storage utilization per system, system managers can easily spend one-fifth to one-third of their time managing disk space. When system management time is factored along with operational resources to purge and restore files, associated materials, as well as overhead, the cost of storage management accumulates quickly. By placing another disk on those systems that are short on space, users can reduce storage management

costs and free valuable resources for other critical activities such as performance tuning and daily processing.

In certain cases, adding another disk can also improve performance. This is especially true of systems experiencing performance problems related to disk drive contention, and systems with abnormally high I/O activity on the operating system disk that do not have adequate disk space to spread files effectively.

Contact your HP representative for more information.

Mass Storage

## HP 35401A obsolescence

The HP 35401A V-inch cartridge auto-changer tape drive will be removed from the HP Price List on November 1,

1990. The HP 35401A has a support life of 10 years.

Product No.	Description	Alternate products
35401A	HP 35401A 5/4-inch cartridge autochanger tape drive	HP Series 6400 Models 1300H and 1300S

The HP Series 6400 Models 1300H (PIN C1511A) and 1300S (PIN C1512A) DDS-format tape drives that provide 1.3 Gbytes of data storage on a single cassette are the recommended alternatives for users wanting high-capacity

tape backup where V-inch tape compatibility is not a requirement.

Contact your HP representative for more information.

Mass Storage

## HP 7962B, 7963B, and 97962B product discontinuance

The HP 7962B and 7963B HP-IB disk drives for users of HP 9000, 3000, and 1000 computers in office or workstation settings will be discontinued on November 1, 1990. Available in initial configurations of 152 or 304 Mbytes, two additional mechanisms can be added through upgrade kits. The 97962B upgrade kit (one of two kits) is also being obsoleted on November 1, 1990. The HP 97963B (304-Mbyte upgrade kit) is *not* being obsoleted. Users with products that use the HP 7962B, 7963B, and 97962B should contact their HP representative as soon as possible to make a lifetime buy.

Models 330S (PIN C2212A) and 660S (PIN C2213A), for users who like the flexibility and expandability of the HP 796XB products. The HP Series 6000 Models 330S and 660S provide improved upgrade possibilities, a much more favorable price-per-megabyte ratio, and higher performance. The HP 796XB products can also be replaced with the HP Series 6000 Models 335H and 670H disk storage products for those users requiring an HP-IB interface. These models offer disk storage at a much lower price, however, they are not expandable in capacity.

These products can be replaced with the SCSI interfaced HP Series 6000

Contact your HP representative for more information.

Product No.	Description	Replaced by
7962B	HP 7962B 152-Mbyte HP-IB disk drive, expandable to 760 Mbytes	HP Series 6000 Models 330S, 660S
7963B	HP 7963B 304-Mbyte HP-IB disk drive, expandable to 912 Mbytes	or HP Series 6000 Models 335H or 670H
97962B	152-Mbyte upgrade kit for the HP 7962B and 7963B	or HP 7957B, 7958B, and 7959B
19560B	19-inch rack mount kit	None

Networks

## Introducing HP LAN Manager/X for 386/486 servers

HP expands its PC LAN network operating system (NOS) products by introducing HP LAN ManagerIX for 386/486 HP Vectra PCs. HP's NOS family of products now includes HP LAN ManagerIX for HP 9000 systems (PIN B1003A and B1011A), HP LAN Manager for OS/2 PCs (PIN D1809A and D1810A), and HP LAN ManagerIX for UNIX system PCs (PIN B1018A). With such a wide product offering, DOS and OS/2 users can have seamless access to OS/2 PC server, UNIX system PC server, or HP 9000 server (when you order any of these server products, you get the server software as well as the DOS and OS/2 client software).

The HP LAN ManagerIX family of products are targeted towards large users that want to standardize on open systems. HP LAN ManagerIX for 386/486 servers is positioned as a lower entry-level UNIX system server for smaller departmental groups that require PC connectivity. Whereas the HP 9000 LAN ManagerIX server can support hundreds of client PCs, the HP LAN ManagerIX for 386/486 servers can support tens of client PCs.

HP LAN ManagerIX for 386/486 server runs on the TCP/IP transport and supports 802.3 links (HP Thin-LAN, HP StarLAN 10, and other third-party cards). The server has to be a 386- or 486-based HP Vectra PC. PCs that are supported are: HP Vectra PC, Compaq, and IBM PS/2s. Contact your HP representative for more information.

*continued on next page*



## Ordering information

Product No.	Description
B1018A	HP LAN Manager/X for 386/486 servers
Opt. 001	16-user license
Opt. 002	Unlimited user license
Opt. 003	Upgrade of user license from 16 to unlimited
D2046A	SCO UNIX System V/386 (5 1/2-inch)
Opt. ABA	American
Opt. ABB	European
D2046B	SCO UNIX System V/386 (3 1/2-inch media)
Opt. ABA	American
Opt. ABB	European

### Networks

## Introducing HP OpenView Network Node Manager

HP OpenView Network Node Manager for HP 9000 Series 300 (PIN B1009A) and Series 800 (PIN B1024A) systems is an HP-UX-based product for managing multivendor TCPIIP networks. It uses SNMP and OSF/Motif and is the only product today with dynamic map. HP OpenView Network Node Manager is targeted towards all industry segments and is best used in campus LANs where TCPIIP and SNMP are prevalent.

### Features and benefits

- **Standards based** — Network Node Manager uses standards such as TCPIIP and SNMP. This secures management of a wide range of other vendors' equipment as well as HP systems and devices.
- **Easy to use** — With a graphical user interface based on OSF/Motif and online help and documentation, network administrators will be using Network Node Manager to more effectively manage their networks within an hour of installation.

- **Automatically drawn map** — Creating and maintaining a network map is one of the fundamental activities necessary for good network management. Network Node Manager does most of the work automatically in minutes, saving network administrators from hours of entering configuration information.
- **Network monitoring** — Once a network map has been generated, Network Node Manager continually displays the status of overall network connectivity on the map using color to highlight important information. This gives one place to look to determine the health of the network and a head start toward maximizing network availability.
- **Event notification** — Because administrators can decide when to be notified about changing conditions on the network, Network Node Manager eliminates unnecessary interaction with the network management system, freeing up additional time for other activities such as network planning or performance tuning.
- **Network diagnostic tools** — Besides identifying network problems, Network Node Manager provides tools to isolate and correct these problems from a central workstation. This keeps network administrators in the Network Operation Center rather than following problems around the facility.

### Product-line positioning

Network Node Manager is part of the HP OpenView family of network and systems management products. Based on the SNMP subset of the HP OpenView Network Management Server, Network Node Manager will run and share data with other applications written on the NM Server.

Network Node Manager represents the first product for management of entire TCPIIP networks that can automatically discover and map a user's network. Other diagnostic and monitoring features offer similar capabilities to other vendors, but are packaged under OSF/Motif, a first for a network management solution.

### Configuration information

Network Node Manager runs on an HP 9000 Series 300 or 800 workstation with at least 8 Mbytes of RAM, six color planes, and a medium-resolution color display. A dedicated workstation is not necessary. HP-UX 7.0 is required. Contact your HP representative for more information.

### Networks

## New release of HP OpenView DTC Manager software

The HP OpenView DTC Manager (PIN D2355A) is the network management software for configuring, downloading, and managing the DTC product family. It is targeted towards HP 3000 and HP 9000 environments where access from DTCs is needed. The new release of HP OpenView DTC Manager (A.04.10) provides the following new features:

- support for the new DTC16/3000
- **backup/restore facility** that enables the network administrator to easily carry out regular backups of the DTC management files, and safeguard the uptime of DTC control tool allowing existing HP OpenView DTC Manager users to quickly and transparently adapt their current configuration to take full advantage of the new features provided

## Software compatibility

HP OpenView DTC Manager	HP OpenView Windows	Enhancements to first release
A.03.05	A.02.05 and A.03.00	<ul style="list-style-type: none"> <li>▪ Local and extended DTC switching support (back-to-back)</li> <li>▪ DTC48/9000 support</li> </ul>
A.04.10	A.03.00	<ul style="list-style-type: none"> <li>▪ DTC16/3000 support</li> <li>▪ backup/restore facility</li> <li>▪ release upgrade tool</li> </ul>

## Ordering information

Effective now, all future shipments of the HP OpenView DTC Manager software will support the new features described above.

users who bought the subscription services of the HP D2355A will automatically receive the new release of this software

- new users, or users without subscription services, need to buy the HP D2355A product

## How to order subscription services

First, users must order the HP software materials update service for the HP Vectra PC. Order this once for

### Networks

## OpenView Windows available on non-HP PCs

HP OpenView Windows (PIN 32048A) is now available on non-HP PCs; it will run on any IBM PC-AT or IBM PS compatible computer with the following components: mouse, VGA color display, and 2 Mbytes of expanded memory. To date, HP has tested OpenView Windows with the following PCs: HP Vectra ES/12, QS/16, QS/20, RS/16, RS/20 PCs; IBM PS/2-50, PS/2-55, PS/2-60, and PS/2-70; Compaq 286 and 386. HP OpenView Windows provides a pictorial representation of a network and is used by network management applications such as the OpenView DTC Manager and the OpenView Hub Manager.

Users may provide their own PC to run an HP OpenView application, or may order the HP OpenView Windows Workstation product (PIN 32054A).

the HP D2355A: P/N H2027A+S00 Opt. OJT. In addition, users must order one of the following services as well: P/N H2026A+L00 Opt. OJT, HP BasicLine for the HP Vectra PC: P/N H2025A+H00 Opt. 0L7, OpenView ResponseLine support; or PIN H2024A+T00 Opt. 0L7, OpenView TeamLine Support.

Users should order P/N D2355A so that the support services ordered will then apply to this product. Ordering the subscription services provides users automatically with future releases of the product and its documentation.

Please contact your HP representative for more information.

The HP OpenView Windows Workstation is shipped with MS-DOS, MS-Windows, OfficeShare, and OpenView Windows already installed and configured. Since this simplifies installation, we highly recommend that users order the OpenView Workstation to run applications.

It is the responsibility of each OpenView application to determine which PCs will be supported for that application. Note that DTC Manager will be supported on other PCs with release A.06.00. This release will be available at the end of the year and a list of PCs will be provided at that time.

Users who are running OpenView Windows on third-party PCs should order the appropriate HP software

support: TeamLine, ResponseLine, BasicLine, and/or Software Product Update. Contact your HP representative for more information.

### Networks

## New release HP TS8 software (LSM) available

HP is introducing a new release of the HP LAN Server Manager (LSM, PIN 2350A) software running for the HP TS8 (P/N 2342A). This release will provide the following new features:

- support of all HP printers through an enhanced printer program
- support of BIND DNS allowing end users to access systems by name rather than by IP address

## Ordering information

This release is available today. Users who bought the subscription services of the HP 2350A will automatically get the new release of this software. Users without subscription services need to buy the HP 2350A product. The subscription services can be ordered under PIN 2350A Options H00, Q00, L00. Ordering the subscription services automatically provides users with future releases of the product and its documentation.

## HP TS8 positioning

The primary objectives of the HP TS8 product at introduction were to:

- help users migrate from HP 3000 MPE V systems to HP 3000 MPE XL systems
- provide direct access to the HP 9000
- provide access to non-HP systems through TCP/IP
- meet the demand for low port counts in physically distributed environments

*continued on next page*

HP's strategy is to provide a single platform that is capable of providing access to HP 3000, HP 9000, and non-HP systems simultaneously.

The DTC/3000 is the solution to provide:

- easy migration from HP 3000 MPE V to MPE XL
- multivendor access through extended switching (in a back-to-back configuration)

The DTC/9000 is the solution to provide:

- direct TCP/IP access to HP 9000 Series 800 systems only

As a result of this evolution of the DTC family, the HP TS8 is now exclusively positioned in HP 9000 Series 800 accounts where:

- multivendor connectivity is required
- low port counts for physically distributed connections are needed

Hewlett-Packard is committed to provide full integration of the HP TS8 with the DTC family to ensure user investment is protected. This is achieved by:

- supporting mixed HP TS8 and DTC/3000 configurations, in which the HP TS8 can talk to the DTC/3000 and vice versa (note that this configuration is only supported to access HP 3000 MPE V systems)
- supporting the HP TS8 printer program on the DTC/9000 in a future release of the DTC/9000 targeted for the second half of 1990.

Contact your HP representative for more information.

### Networks

## NS X.25 PAD printer enhancement now available

The NS X.25 3000/V Network Link (P/N 24405A) provides MPE V systems access to remote terminals and printers connected to a Packet Assembler/Disassembler (PAD). With release V-Delta-8 of the MPE V operating system, NS PAD is able to support a printer control language (PCL) printer connected to a remote HP 2334A or 2335A. The support of PCL printers provides users with a wider variety of printers that are configurable as PAD devices.

The initial release of the NS PAD portion of the NS X.25 Link supported only Term Types 18 and 26 for printers. The enhancement to NS PAD allows it to access Terminal Type files. NS PAD now supports a subset of the Terminal Type file features available, and can implement Terminal Type functionalities based on the information in these files. This enhancement supports PCL printer term types TTPCL 18 and TTPCL 26. *Note: this enhancement provides Terminal Type file support for printers only.*

Another feature available with this enhancement is the ability to customize certain Terminal Type functionality through Workstation Configurator. Through access to the Terminal Type file, certain device control operations (device initialization strings and number of status request retries) can now be customized.

For more information on this enhancement, please contact your HP representative. Also available is the updated NS X.25 3000/V Link Installation and Configuration Guide (PIN 24405-90002) from HP DIRECT.

### Printers

## HP MasterType Library enhancements

The HP MasterType Library has been reorganized to aid in understanding, choosing, and educating HP LaserJet printer users about HP type products.

### Features

The Unabridged HP MasterType Library Encyclopedia (PIN 5952-1978D) and a six-panel flier entitled HP MasterType Library Selection Guide (PIN 5952-1983D), help communicate the vast type-product offering available to HP LaserJet printer users.

The power of the HP MasterType Library has been organized with two kinds of products: convenient bit-mapped fonts, and flexible scalable typefaces. Both kinds of fonts are available on disk and cartridge.

### Benefits

- 11 bitmapped font cartridges
  - total font solutions packaged by software applications
  - uses no printer or hard disk memory
  - installs in your printer for sharing by multiple users
- 3 disk-based bitmapped fonts
  - economical (more and larger fonts than on bitmapped cartridges)
  - popular preset sizes
- 5 scalable typeface disk collections
  - contain 12 solution-oriented typefaces
  - educational documentation
  - ability to store on your hard disk
- 2 scalable typeface cartridge collections
  - for HP LaserJet III printers only
  - up to 26 solution-oriented typefaces
  - scalable to 999.75 points
  - simple to plug into the printer and use
  - educational documentation

- 23 individual scalable typeface products on disk
  - contain 4 typefaces
  - customize your own typeface library
- Type Director version 2.0 font management program (users will need Type Director version 2.0, in order to access scalable typeface disk products.
  - creates fonts in 1/4-point increments for the HP LaserJet III printer
  - creates and downloads files for HP LaserJet III printers that are scalable to 999.75 points
  - supports new printers (HP LaserJet printer family, HP PaintJet and PaintJet XL printers, HP DeskJet and DeskJet Plus printers, IBM Proprinter, and Epson FX printers)
  - improved user interface

#### Product-line positioning

The HP MasterType Library is dedicated to one purpose: to help LaserJet printer users make their documents look more professional. Whatever the application or level of sophistication, the HP MasterType Library offers a customized typeface product solution to fit users' needs.

All products are solution oriented to help users choose the correct HP MasterType Library product based upon the kinds of documents users want to produce.

HP LaserJet III or IID printer when connected to an HP 3000 MPE XL or MPE VIE system. It is marketed towards HP 3000 users who require protection from data loss in case of printer power failure.

#### Features and benefits

The addition of an HP 26013A card to the HP LaserJet III printer allows the printer to support status checking. The HP LaserJet IID is also supported on MPE XL and MPE VIE systems with the addition of the HP 26013A card.

The HP 26013A card plugs into the optional I/O slot in the back of the HP LaserJet III printer and can be easily installed by the user. Instructions on how to install the card into the HP LaserJet III printer and how to configure the HP 3000 are provided with the HP 26013A card.

The HP LaserJet III and IID printers configured with the HP 26013A card are supported on HP 3000 MPE XL and MPE VIE systems in the same configurations as other members of the HP LaserJet printer family. Without the HP 26013A card, the HP LaserJet III and IID printers do not support status checking. Support for these configurations without the HP 26013A card is limited to printer type 18.

MPE VIE system support limitations

- ATP only, pass three and greater
- PCCs, no ADCC support

#### Supported SPUs and support maximums

HP 3000 system	HP LaserJet III printer maximum
HP MICRO 3000	1
HP MICRO 3000LX	1
HP MICRO 3000GX/RX/XE	2
Series 37/37XE	1
Series 39-58	2
Series 6X-70	5
Series 922/922LX/922RX	5
Series 925LX/925	4
Series 932	8
Series 935	8
Series 949	15
Series 950	10
Series 955	15
Series 960	20
Series 9801100	> 20
Series 9801200	> 20

For more information on the HP 26013A card, please contact your HP representative.

Printers

**HP Word family  
supports new  
HP LaserJet printer  
font cartridges**

## PRODUCT NEWS

Original	Replacement
92286Q	922861C or C2053A #C03
92286F	922861C or C2053A #C08
92286M	C2053A #C03
92286N	C2053A #C03
92286P	922861C

*Note: All the original cartridges were discontinued April 1, 1990, except P/N 92286Q, which was discontinued on January 1, 1990.*

The HP Word family will continue to be supported on the discontinued fonts until the end of the original fonts' discontinuance life or the HP Word product's life.

### HP Word/PC

Currently, HP Word/PC supports the following fonts: PIN 92286F/M/N/P/Q. Their successors are as follows:

Original font	Successor(s)
92286F	922861C, C2053A #C08
92286M	C2053A #C03
92286N	C2053A #C03
92286P	922861C
92286Q	922861C, C2053A #C03

*Note: All products began support on April 1, 1990, except P/N 92286Q, which began support on January 1, 1990.*

The P/Ns 922861C, C2053A #C03, and C2053A #C08 are compatible with the

### HP WordServices

Current plans are to have HP WordServices supported on the preceding successors by April 1, 1990. HP WordServices is part of the Word Migration Strategy, and as a host-based formatter, provides HP Word/PC users the power of the host for file integration and shared printing capabilities. A patch will be released to provide the new support.

### HP Word/3000

To date, there are no plans to support the discontinued HP Word/3000 with the new font cartridges. HP will investigate and develop support if the user is willing to pay the costs. Contact your HP representative for more information.

#### Printers

## HP toner cartridge recycle program announced

Starting June 1, Hewlett-Packard will be collecting used HP LaserJet printer toner cartridges in a recycling program being piloted in the western United States\* and parts of Europe. It is anticipated that this program will be expanded to other states and Canada early next year.

This recycling program has been designed as a convenient method for HP LaserJet printer users to return their spent toner cartridges free of charge. The Toner Cartridge Recycle Kits (PIN 5952-2368) contain the information and materials required to return each cartridge and will be distributed by participating supplies dealers.

Contact your HP representative for more information and to obtain a kit.

*\*Initially available in Arizona, California, Colorado, Idaho, Montana, Nevada, New Mexico, Oregon, Utah, Washington, and Wyoming.*

### Supplies

#### Supplies

### HP DIRECT order phone numbers

HP DIRECT Fast Phones—the easy, direct way for users to order supplies, accessories, media, furniture, and software from HP DIRECT.

Location	Telephone Number
Australia	(03) 895-2645 (03) 895-2615 (03) 895-2815 (03) 895-2861 (03) 895-2619 (800) 339-861 (toll-free)
Austria	(0222) 2500-614/615/616
Belgium/Luxembourg	(02) 761 31 11
Canada	800-387-3154
Toronto Local	416-671-8383
Denmark	80 30 16 40
Finland	(00) 887 2361

## Software Packages Available and Wanted

If you are an HP VAB with a current HP contract and have a software package available for cross-licensing, or are looking for a package to cross license, this section will help you. Your entry will appear for two months; the most recent additions are shaded. To list your company in the Cross-Licensing Classifieds (at no charge), see the address at the end of this section.

### Software Packages Available

**Industry:** *Manufacturing, distribution, finance, and data collection*

**Abstract:** A complete Oracle-based menu-driven business management system for manufacturing, financial, and distribution environments. The software operates on any platform that supports the Oracle RDBMS, which includes HP 9000 UNIX systems and HP 3000 MPE and MPE XL systems.

The software consists of 15 integrated modules. The Base Module, which contains the Menu System, System Security, and Utilities, is required for the application of all other modules. The modules include:

- Base Module
- Inventory Management
- Purchasing, Receiving, and Requisitions
- Customer Order Processing
  - Product Structure Processing
- Routings and Work Centers
- Work Order Management
- Work Order and Product Costing
- Work-In-Process Reporting
  - Production Tracking
  - Time and Attendance
  - Material Requirements Planning
- Accounts Receivable
- Accounts Payable
- General Ledger

#### Features

- based upon Oracle RDBMS to allow transparent portability across all major hardware platforms. Allows hardware upgrades without loss of software investment
- developed with Oracle 4GL for efficient customization of applications
- transaction oriented to integrate with bar-code readers and other automated data acquisition systems
- **SQL\*plus** enables custom ad hoc reporting from within the system
- handles multiple warehouses, multiple currencies, well suited for widely distributed or multinational installations interfaced with data collection systems
- installed in networked environments

Installed customers include Fortune 100 and Japanese manufacturers.

Seeking growing VAR/VAB to take full ownership of all software copyrights, title, and source code. Maintenance agreements with existing installed customers available for transfer to new owner.

**Company Name:** Crowe, Chizek and Company

**Address:** 10 West Market Street, Suite 2100  
Indianapolis, IN 46204-2976  
U.S.A.

**Phone:** 317-632-8989

**Contact:** Michael Rubin

**Type of Distributor Wanted:** Open

**Geographical Coverage:** Worldwide

**Industry:** *Aeronautical companies and aeronautical fleet maintenance companies*

**Abstract:** AMS (Aeronautical Maintenance Support) System is a fully integrated maintenance support software for aeronautical companies needing the following functions:

- inventory control
  - purchase orders
  - materials receiving control
  - purchasing invoice auditing
  - stock movements
  - statistics
- rotatable control
  - rotatable installation/removal on aircraft
  - assembly/disassembly of components on ground
  - aircraft logbook management
  - on-board expiration components check
  - statistics
- production planning
  - component operation and storage limit analysis
  - aircraft operation limit analysis
  - expiration check on aircraft and components
  - due dates of technical orders
  - work order management (internal and external)
  - third-party work orders
  - statistics
- technical documents
  - service bulletin analysis
  - maintenance program
  - technical incidents delay and cancellation
  - companies generated by pilots report
  - maintenance monitoring program (reliability analysis)

#### Features

- HP COBOL II, HP VPLUS, and HP TurboIMAGE
- 300 programs
- on-line, menu-driven, multiuser
- multicompany, multistore
- English language used in the whole system (screens, reports, messages)

**Requirements:** HP 3000 classic or MPE XL system

**Company Name:** SISTEMI S.p.A.

**Address:** Via Varesina, 76  
20156 MILANO  
Italy

**Phone:** +39-2-334121

**Far:** +39-2-33412333

**Contact:** Rossano Ziveri

**Type of Distributor Wanted:** A well-established HP 3000 VAR with existing exposure to aeronautical companies or aeronautical maintenance companies

**Geographical Coverage:** Worldwide

**Industry: Service — field, depot, or technical support**

**Abstract:** Sidon's Service Information Management System (SIMS) is a cost-effective solution for equipment manufacturers and dealers. The SIMS product offers a completely integrated sales, service, inventory, and financial management software. SIMS modules may be utilized individually, or as a complete package, delivering the total solution. SIMS, being UNIX system-based runs on HP 9000 systems and HP Vectra PCs.

Individual modules of SIMS include Master Files Service Management, Technical Support, Depot Repair, Contract Management, Logistics and Inventory, Billing Management, Sales and Order Entry, Purchasing and Receiving, Accounts Receivable, Accounts Payable, Fixed Assets, and General Ledger.

SIMS utilizes a relational database manager that is programmed through the use of **table-driven** files. Users may create and utilize their own descriptions in table files eliminating the need to learn hardcoded terminology.

SIMS on-line windows allow users to access different functions throughout SIMS and return to their original position in the program without going through multiple screens and menus.

SIMS users may create new data files and design their own screens to capture and report information that is totally independent of the SIMS software.

**Features**

- central relational database
- handheld data entry interface
- bar-code reader interface
- touch-tone phone connectivity
- on-line documentation
- maximum disk space efficiency
- data field flexibility
- help screens

**Requirements:** HP 9000 and HP Vectra PCs

**Company Name:** Sidon Data Systems

**Address:** 18007 South Mitchell  
Irvine, CA 92714  
U.S.A.

**Phone:** 714-553-1131

**Conracr:** James E. Reed

**Type of Distributor Wanted:** Presales, sales, postsales support

**Geographical Coverage:** International, excluding U.S.A. and Canada

**Industry: Advertising, public relations, media buying**

**Abstract:** The Datatrak system is an integrated turnkey solution that includes all the required software applications to run an advertising agency. Integrated with HP **NewWave** Office products such as HP **DeskManager** and HP Information Access, the system enhances an advertising agency's internal communications and makes all operations more efficient. Datatrak addresses three key applications areas with the following products:

**Financials**

Accounts Payable Datatrak — comprehensive system for processing accounts payable and disbursements

- Accounts Receivable Datatrak — controls invoice entry, sales analysis, and all cash receipts
- General Ledger Datatrak — an advanced financial management system for capturing and r general ledger data
- Time Accounting/Client P — wide entry of bill able/chargeable time-reports to reflect billing, income, and expense data related to client

**Media**

- Spot Broadcast Datatrak — tracks spot television/radio activity with planning, buying, billing, paying, and post evaluation
- Network Media Datatrak — Budgeting, planning, buying, billing, paying, and post evaluation for advertising on network television, radio, and cable
- Print Datatrak — provides comprehensive control over all magazine and newspaper media information for the ad agency
- Outdoor Datatrak — controls planning, ordering, billing, and paying for the various outdoor media for the ad agency

**Production and traffic**

- Production/Estimating Datatrak — controls all information critical to ad agency job processing and reporting
- Account Coordination Datatrak — schedules and controls jobs or projects so as to control operating costs and maximize productivity
- Broadcast Forwarding Datatrak — serves the ad agency in the task of trafficking materials to radio and TV stations

**Requirements:** HP 3000, MPE V, and MPE XL Native

**Company Name:** DSI Datatrak Systems, Inc

**Address:** 10 Sylvan Way  
Parsippany, NJ 07054  
U.S.A.

**Phone:** 201-267-5990

**Contact:** Rick Haan

**Type of Disrributor Wanted:** Open

**Geographical Coverage:** Europe

**Industry: Programming environments for the HP 3000**

**Abstract:** Software Plus SA announces the release of **CI/3000**, a software package that will boost ease of use and productivity for those who work **directly** with MPE commands.

**Features**

**CI/3000** has a command stack like the **CI/1000**. It allows users to retrieve the last 200 commands (20 at a time) to edit and execute using the HP **terminal** features. This also allows users to verify where they were before an **interruption**.

**CI/3000** helps **programmers** organize the working environment. All the files derived from a source retain the same name, but reside in different groups. There are abbreviated commands that default to the appropriate groups similar to how **CI/1000** or MS-DOS uses file extensions. For example, the "RUN" command is simplified. Instead of typing 'RUN Prog. group.acct; info=' info string,'" you need to type only 'prog info string.'

You can use command files with up to nine replacable **parameters**. These command files are not "jobs" or "UDCs." You can edit and execute them **immediately**, which is very useful in setting up test environments, **etc.**

**CI/3000** allows users to run programs without waiting for completion. This allows them to do other tasks while a program is running.

In addition, **CI/3000** has commands to allow users to:

- see the contents of a file, pausing at **screen intervals** (TYPE)
- return the unused file space to MPE (TRUNC)
- leave a file **as** it was, but with the **EOF=O** (CLEAR)
- move files (**copy** and then purge original)

These commands (and those to purge, copy, and rename files) allow users to operate on a set of files using wildcards that will supply default destinations when none have been specified.

**Requirements:** HP 3000 "classic" system

**Company Name:** SoftWare Plus SA

**Address:** Larrea 1218 - 2A  
(1117) Buenos Aires, CF  
Argentina

**Phone:** +54 (1) 826-2532 and +54 (1) 824-7554

**Far:** +54 (1) 34-5437 \*\*\* User ID: SWP \*\*\*

**E-Mail:** swp@dcisp.das net or ...!sun!dcisp.das.net!swp  
or leave mail to Eduardo Salom in the **Interex** BBS

**Contact:** Eduardo Salom

**Type of Distributor Wanted:** Open

**Geographical Coverage:** Worldwide

**Industry: Warehouse Management System**

**Abstract:** Bakco provides a fully integrated, on-line warehouse management system (WMS) with bar coding throughout to control warehouse space, inventory equipment, and labor.

The objectives of the Bakco WMS are to assist management in increasing productivity and reducing warehouse costs, while continually providing tight control of every aspect of the warehouse operation. The Bakco WMS provides management with the necessary tools and information that give them the ability to do the following:

- Provide inventory management information to effectively lay out the warehouse, such as highlighting A-B-C activity, slow-moving items, item service levels, inventory turns.
- Optimize the utilization of the warehouse by systematically monitoring and providing information on the inventory stored in each warehouse location.
- Automatically determine the best warehouse **location(s)** to store incoming inventory, whether based on primary **picking** locations, random slotting techniques, or a combination of both in the same warehouse.
- Ship inventory to customers from any location in the warehouse on a first-in-first-out (FIFO) basis.

- Pick customer orders based on the most efficient method of **picking** the inventory; such as the dependency on storage type (i.e., full pallets, cases, or piece picks). Other wave picking methodology is available as well.
- Automate replenishment activities within the warehouse. Streamline inventory counting (cycle counting) techniques to minimize inventory discrepancies and year-end physical inventory counts.
- Enhance employee performance, because of storage and retrieval efficiencies, workload management and precise productivity reporting. Maintain tight control of inventory in the warehouse at all times, providing accurate inventory tracking for reductions in safety stocks, minimized likelihood of stockouts and product loss, and fewer customer returns resulting from picking and shipping errors. Quickly activate a recall of certain **lot(s)** of inventory items delivered to specific customers. Capture serialized information for warranty tracking. Reduce labor activity required to put away, pick and move inventory within the warehouse. Reduce the costs of operating a warehouse on an on-going basis.
- Ensure accuracy of system information by supporting numerous data collection techniques, such as bar coding, scanning, and radio frequency communications. Standard interfaces to automate storage & retrieval systems are also available.

Bar Coding has been integrated within the Bakco WMS to eliminate the likelihood of human error and to ensure inventory accuracies. The Bakco WMS has the capability of printing and scanning bar code labels of various format, such as: UPC, 2 of 5, and Interleave 3 of 9, etc.

Bakco is an HP Premier Solutions Provider.

**Company Name:** Bakco Data, Inc.

**Address:** 1417 Lake Cook Road  
Suite 100  
Deerfield, IL 60015  
U.S.A.

**Phone:** 708-940-8330

**Contact:** Jerry D. Baker

**Requirements:** HP Platform: HP 3000  
Operating systems: MPE and MPE XL

**Type of Distributor Wanted:** Open

**Geographical Coverage:** Worldwide

If you are an HP VAB with a current contract, you can list your company in the **Cross-Licensing Classifieds** (either **Software Packages Available** or **Software Packages Wanted**) by sending the information in the format used here to:

Hewlett-Packard Company  
Value-Added Channels Development  
**Attn: Marcia Nowicky**  
19091 Pruneridge Ave.  
Building 46UV  
Cupertino, CA 95014  
U.S.A.

Entries will run for two months. The most recent additions are shaded. Be sure to send the information in at least one month before you wish it to appear.



**How to get your name added to the distribution for HP Channels**

If you work for a company that is a value-added business for Hewlett-Packard and want to receive a courtesy subscription to *HP Channels*, call Hewlett-Packard and have your sales rep add your name to the distribution list.

**HP sales reps only:** To add *new* U.S. or Canadian accounts to the distribution for *HP Channels*, please fill out a copy of "The Data Kit for Value-Added Businesses," P/N 5954-9091D, and return it to the appropriate contact listed on the cover page of the data kit. To add additional contact names to existing accounts, use your VALID edit sheets.

**For accounts outside of the U.S. and Canada:** contact Tracy Wester for the name of the person responsible for the distribution of *HP Channels* in your country.

Please address editorial correspondence to Tracy Wester at address listed below.

---

## *HP CHANNELS*

*Hewlett-Packard Company  
Tracy Wester, Editor  
Corporate Marketing Communications  
3200 Hillview Avenue, Building 16L  
Palo Alto, CA 94304-1298 USA*